

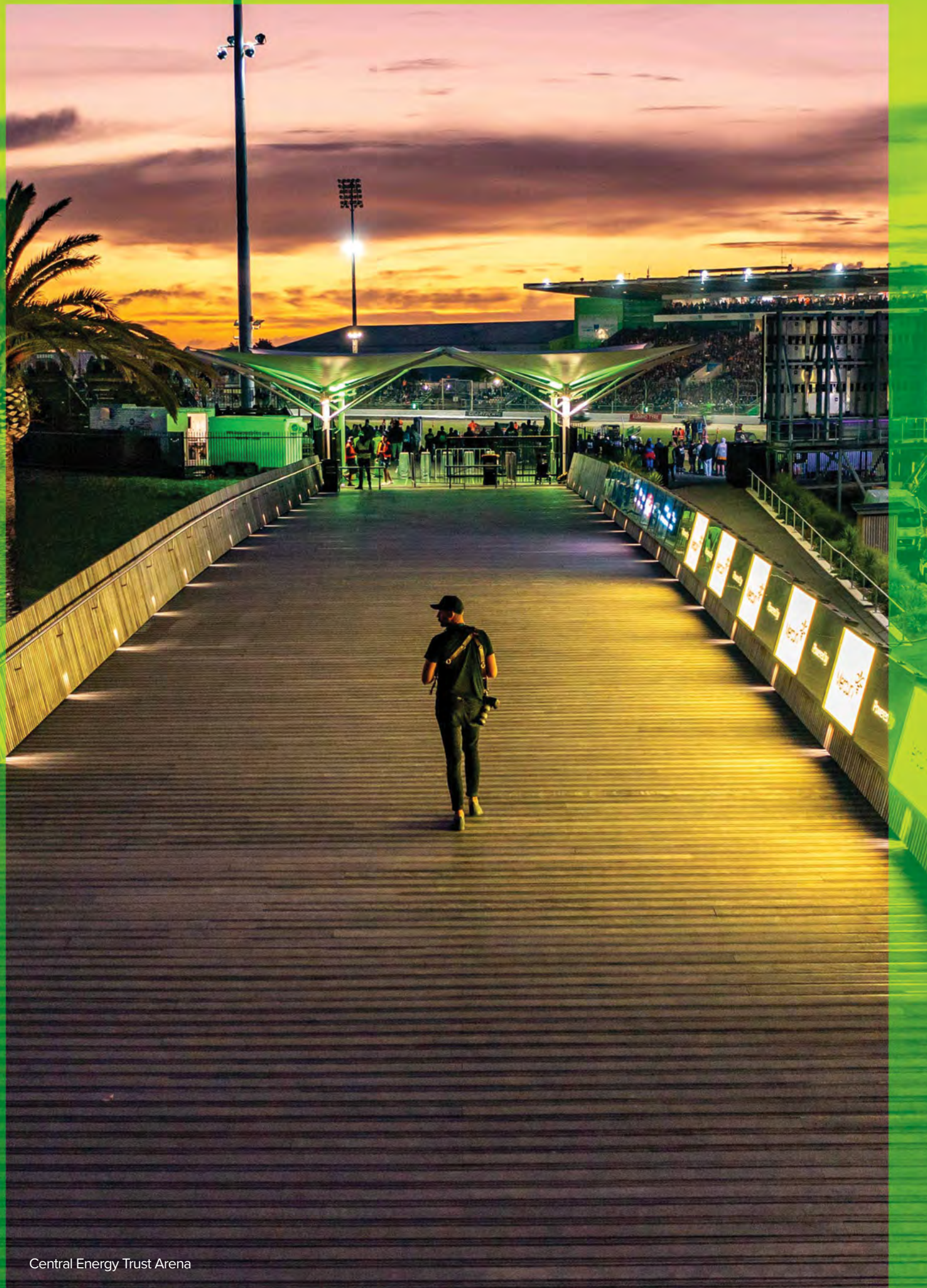


# A TASTE OF PALMY AND MANAWATŪ

**MANAWATŪ**  
CONVENTION  
BUREAU

CONFERENCE + BUSINESS EVENTS HANDBOOK





Central Energy Trust Arena

# Contents

04

Welcome to  
Palmy and  
Manawatū

10

Taste your  
way around

05

Our region  
at a glance

13

Explore our  
iconic venues

06

Getting here

24

Find your  
next venue

09

Discover  
our region

29

Accommodation





# Welcome to Palmy and Manawatū

**Palmerston North (or as we like to call it, Palmy) and the Manawatū are innovative and exciting destinations ready for your next event!**

We have state of the art venues that are no strangers to hosting premium conferences and business events. From a grand theatre that exudes elegance and charm, to an international motorsport track or a bespoke country club where you can step out of the meeting room and straight onto the green, our region has it all.

Travelling here is easy by road, air or rail and once you've arrived, you can get around with absolute ease. You'll love discovering Palmy and Manawatū through the eye of a local, with our rich arts scene, immersive bush walks and adrenaline junkie activities.

You'll be able to explore our venues in a matter of minutes. Whether you're walking, driving, catching a taxi or taking an e-scooter, you'll be between venues in no time. Plus, most of our accommodation providers are only a hop, skip and a jump away from your event.

Our thriving urban centre is in the heart of the lower North Island, and together we have an established business ecosystem that is well-connected and home to some of the brightest minds in Aotearoa. We're leading the way with industry research, sustainability, nutrition, infrastructure and the future of food. We are a hub for industry research and development labs, plus we have the highest number of PhDs per capita in New Zealand. We're also a future-focused region that cares about enhancing our natural and built environment.

**So come on, why not check out Palmy and Manawatū?**

## Our region at a glance

We've got  
**3085**

beds  
to book with



**98**

accommodation  
providers.

We're home to Massey University, UCOL Te Pūkenga and Institute of the Pacific United New Zealand campuses.



We have over  
**3900**

scientists and researchers working here, and we're home to three Crown Research Institutes and FoodHQ.



**Palmerston North Airport**



has gained Level 2 of the internationally recognised Airport Carbon Accreditation Programme.

We have over

**30**

different venues and hotels with capacity to host a variety of conferences and business events.

We had a

**30% increase**

in domestic and international visitors from December 2021 to December 2022.

We are the epicentre of

**agrifood innovation**

in New Zealand.



We have a catchment of more than

**1.1 million**

people within a three-hour drive radius.

We're home to the only **professional theatre**

outside of the four main cities.



# Getting here



### Air

Our airport is only a short 10-minute drive to Palmy's city centre and 15-minute drive to Feilding.

Palmerston North Airport services Air New Zealand and OriginAir with daily direct flights from Auckland, Christchurch, Nelson and Hamilton.

OriginAir has a daily service from Nelson to Palmerston North, Palmerston North to Hamilton and return.

### Total flight times

Auckland	1 hour
Hamilton	50 mins
Tauranga	1 hour 40 mins
Rotorua	1 hour 45 mins
Taupō	1 hour 55 mins
Nelson	45 mins
Christchurch	1 hour 10 mins
Queenstown	2 hours 5 mins
Dunedin	2 hours 15 mins
Invercargill	2 hours 30 mins



### Drive

Accessing Palmy and Manawātū is easy, with multiple options from the main North Island highways.

If you take our suggested scenic routes you'll find that the region provides a spectacular driving experience.

### Drive times

Taupō	3 hours
Wellington	2 hours
New Plymouth	3 hours
Whanganui	45 mins
Napier	2 hours



### Train

The Capital Connection is a commuter service operated by KiwiRail that runs weekdays between Palmerston North and Wellington.

The train departs Wellington (to Palmy) at 5.15pm and returns from Palmy (to Wellington) at 6.15am on weekdays.



### InterCity bus

InterCity buses travel daily to Palmy and Manawātū from a variety of locations all around the North Island.

Our main InterCity bus stop is located in Palmy's city centre, next to Palmerston North isite in Te Marae o Hine - The Square.

Around 26-35 buses arrive daily.

# Once you're here...



### Regional + city buses

Transit buses travel daily between the regional bus shelters operating over 35 routes. These services run between 6.30am until 9.45pm.

Bee Cards or cash can be used for this service.



### Walking

Sometimes, the best way to get around is on foot. Given our region's compact nature the majority of our hotspots are within walking distance from each other. Take advantage of over 550km of footpaths and explore our streets where you'll be sure to find some hidden gems.



### E-scooters

E-scooters are not only a fun addition to our innovative, growing and vibrant city, they provide the perfect low-emission transport network to connect you and your delegates to their destinations. Lime, Beam and Flamingo scooters are available for use in Palmy's city centre.





# Explore our iconic venues

---

Palmy and Manawātū offers a variety of options when it comes to conference and event venues. Those seeking a unique venue have the option of hosting their event at our grand theatre, international motorsport track or a bespoke country club. All of this is combined with the city's award-winning coffee, café and restaurants, with nearby activity and break-out options!

Dinner on the stage for 150 Years  
of Palmerston North City  
Celebration at Regent on Broadway





## Two36

Two36 caters for all types of meetings and work functions. Their meeting rooms are available for hire, fully equipped with modern technology to help you stay connected remotely. They have small rooms that cater for up to six people and two spaces that can accommodate up to 20 people. The conference room has a capacity for 60-75 people.

Theatre	U-Shape	Boardroom	Classroom	Banquet
80	30	40	60	-



## The Globe Theatre

The Globe Theatre is a stone's throw away from Palmy's city centre. The main theatre, which seats 200 people, has tiered seating suitable for corporate events and is fully equipped with lighting, audio and world-class acoustics. In 2014 The Globe Theatre re-opened after completing a major redevelopment throughout, along with the exciting addition of a new 100 seated auditorium and a welcoming foyer space.

Theatre	U-Shape	Boardroom	Classroom	Banquet
200	-	-	-	-



## Caccia Birch

Caccia Birch House is a magnificent historic homestead with a range of spaces ideal for seminars, meetings and weddings. Each elegantly decorated room has a beautiful vista over the expansive gardens and Centennial Lagoon. Caccia Birch is located 2km from Palmy's city centre in the beautiful suburb of Hokowhitu.

Theatre	U-Shape	Boardroom	Classroom	Banquet
65	20	28	28	100



## Copthorne Hotel

The Copthorne Hotel is located on the edge of Palmy's city centre. The Steeple Conference Centre offers four well-appointed rooms, all air-conditioned with optimum flexibility in terms of style, seating arrangements and presentation facilities. Big, small, simple or extravagant, from business meetings and conferences to life's milestone celebrations, the experienced conference team are experts at coordinating professional events.

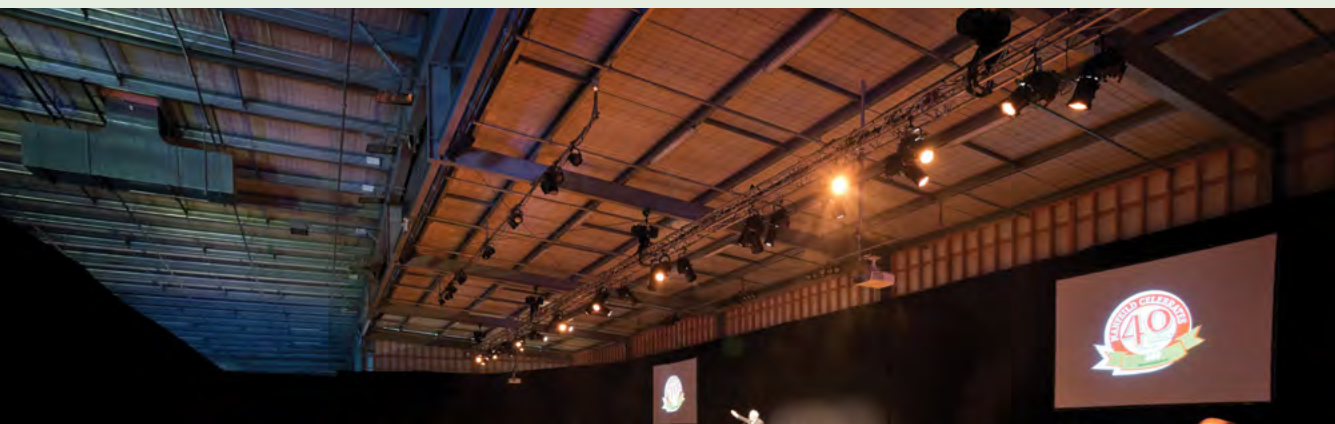
Theatre	U-Shape	Boardroom	Classroom	Banquet
150	40	42	65	120

## Orlando Country

Orlando Country hosts functions, product launches, workshop seminars, cocktail functions and conferences in their private functions room. With different full day and half day options the team can help you organise a conference or corporate event that suits your business and itinerary. Orlando Country also offers team building activities, making use of the wide-open spaces and natural rural theme.



Theatre	U-Shape	Boardroom	Classroom	Banquet
220	40	25	120	200



## Manfeild Park

Nestled in 88 hectares of parkland, Manfeild Park offers a flexible range of facilities in Feilding. Its versatile conference spaces can cater from 20 to 5,000 people. In addition to its expansive corporate suite, overlooking 30 hectares of grassland and internally to the stadium, Manfeild Park has five modern adjoined suites overlooking Circuit Chris Amon which can cater from 12 to 160 people.



Theatre	U-Shape	Boardroom	Classroom	Banquet
5000	30	50	80	1800



# Massey Venues

Venture out to the Massey University campus to experience their venues, less than 10-minutes drive from Palmy's city centre. Massey's historic homestead of Wharerata, set in magnificent turn-of-the-century gardens, provides a stunning setting for indoor and outdoor events. If you're after something a little more hi-spec, the Sport & Rugby Institute offers on-site tech equipment. Treat your delegates to Massey's superb catering, stylish surroundings and charming Manawatū hospitality.



## Sport & Rugby Institute

Theatre	U-Shape	Boardroom	Classroom	Banquet
100	30	30	60	300



## Wharerata

Theatre	U-Shape	Boardroom	Classroom	Banquet
100	30	30	50	90



## Victory Venue

Found in the heart of Palmy's vibrant city centre, Victory Venue offers a contemporary open space complete with a 15m bar. Victory is a blank canvas that can be dressed up or down to suit your event with their on-site furniture hire. With three large New York style loft apartments that comfortably sleep up to 22 people upstairs from the venue, Victory Venue is the perfect place for convenience and style.

Theatre	U-Shape	Boardroom	Classroom	Banquet
180	120	100	80	160



## The Chalet

Situated halfway along the Centennial Lagoon in Palmy, and nestled amongst the trees, the Chalet is the perfect setting for a conference, meeting or dinner. With sloping macrocarpa ceilings, large glass windows overlooking the lagoon and surrounding grounds, the Chalet has a peaceful atmosphere tucked away from the hustle and bustle of the city. The Chalet is conveniently located in Hokowhitu, a five minute drive from the city centre and close to accommodation on Fitzherbert Avenue.

Theatre	U-Shape	Boardroom	Classroom	Banquet
130	35	35	-	130



## Manawatū Golf Club

Overlooking the 18th green, the modern Clubhouse is an ideal venue for your next business meeting, workshop, product launch, seminar or conference. The Clubhouse can be partitioned to provide separate function areas to cater for small or larger events. The Manawatū Golf Club will give you the privacy you need in a truly picturesque environment, while still being only minutes from the city centre.



Theatre	U-Shape	Boardroom	Classroom	Banquet
200	40	20	80	140





### New Zealand Rugby Museum

Take your delegates on a trip back in time to explore the rich history of Aotearoa's mighty game, with an unmasking of its rugby heroes and legends. Perfect for meetings, team building, networking events and welcome functions, the New Zealand Rugby Museum is centrally located, only a short drive to the airport and within walking distance to Palmy's premium accommodation.

Theatre	U-Shape	Boardroom	Classroom	Banquet
30	20	20	15	-



### Distinction Coachman Hotel

Distinction Coachman offers the perfect venue for corporate meetings, seminars and private dining. Their conference team can plan and coordinate your event, making your job stress free. Their dedicated conference manager will work closely with you, ensuring all your requirements are met. Distinction Coachman offers seven meeting and function rooms, a full selection of AV and media equipment, catering and a selection of hotel and motel accommodation.

Theatre	U-Shape	Boardroom	Classroom	Banquet
200	40	25	75	150



### Focal Point

There's no better way to impress than by taking a completely fresh approach to corporate entertainment and events. Offering premium meeting spaces, a licenced café and four luxury cinemas, Focal Point Cinema is perfect for a team day, meeting or dinner. Take the stress out of your event with everything you need under one roof. To finish the day, delegates will unwind with a private viewing in luxury with reclining leather seats and delicious food.

Theatre	U-Shape	Boardroom	Classroom	Banquet
50	30	30	30	40

## Palmy Venues

No matter how big or small your event, Palmy Venues and their team of venue and event coordinators have extensive knowledge of the events industry and will work alongside you to create a seamless event. With two great centrally located locations, Palmy Venues have an array of indoor and outdoor arenas and hi-spec conference and function rooms capable of hosting events big or small. Their team includes audio-visual technicians and caterers to provide all the support you need for your event.

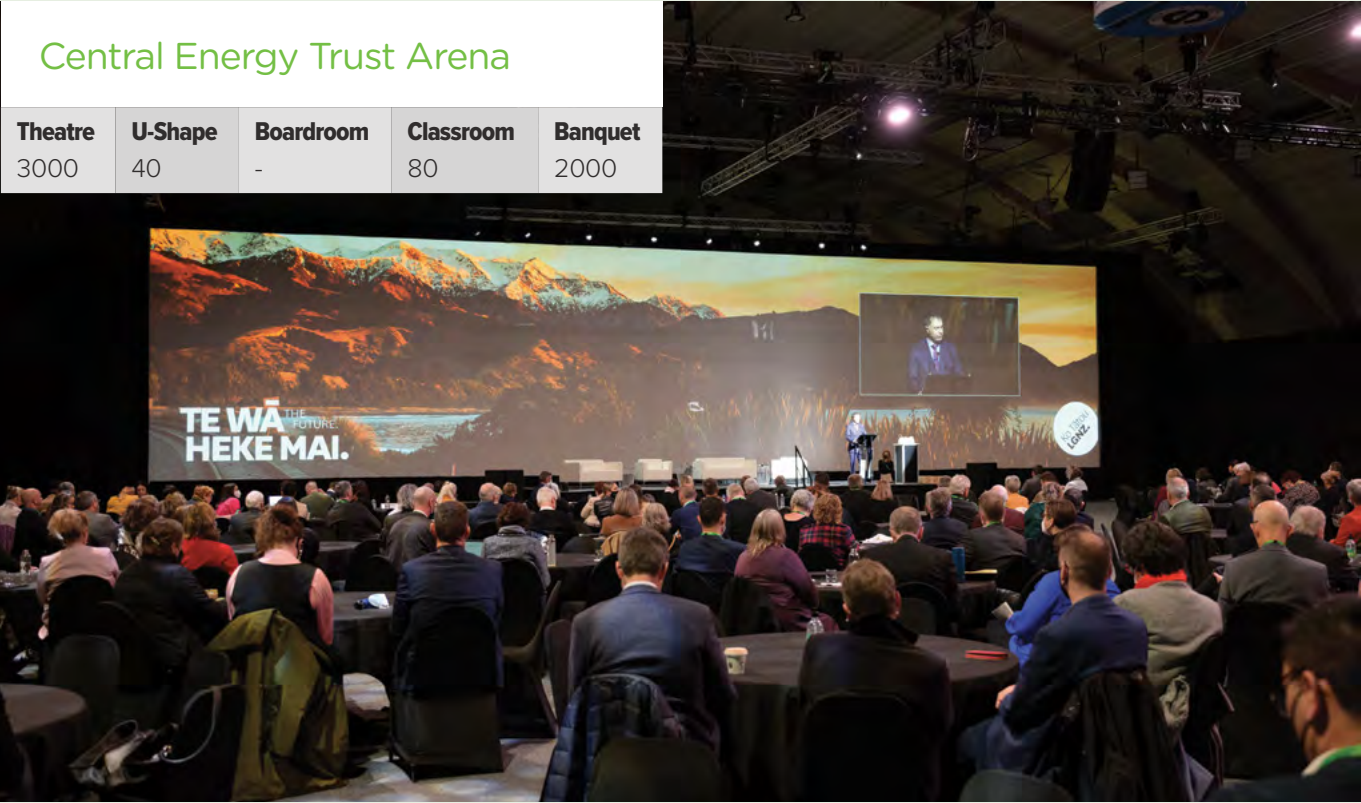


### Palmy Conference + Function Centre

Theatre	U-Shape	Boardroom	Classroom	Banquet
550	50	34	50	500

### Central Energy Trust Arena

Theatre	U-Shape	Boardroom	Classroom	Banquet
3000	40	-	80	2000

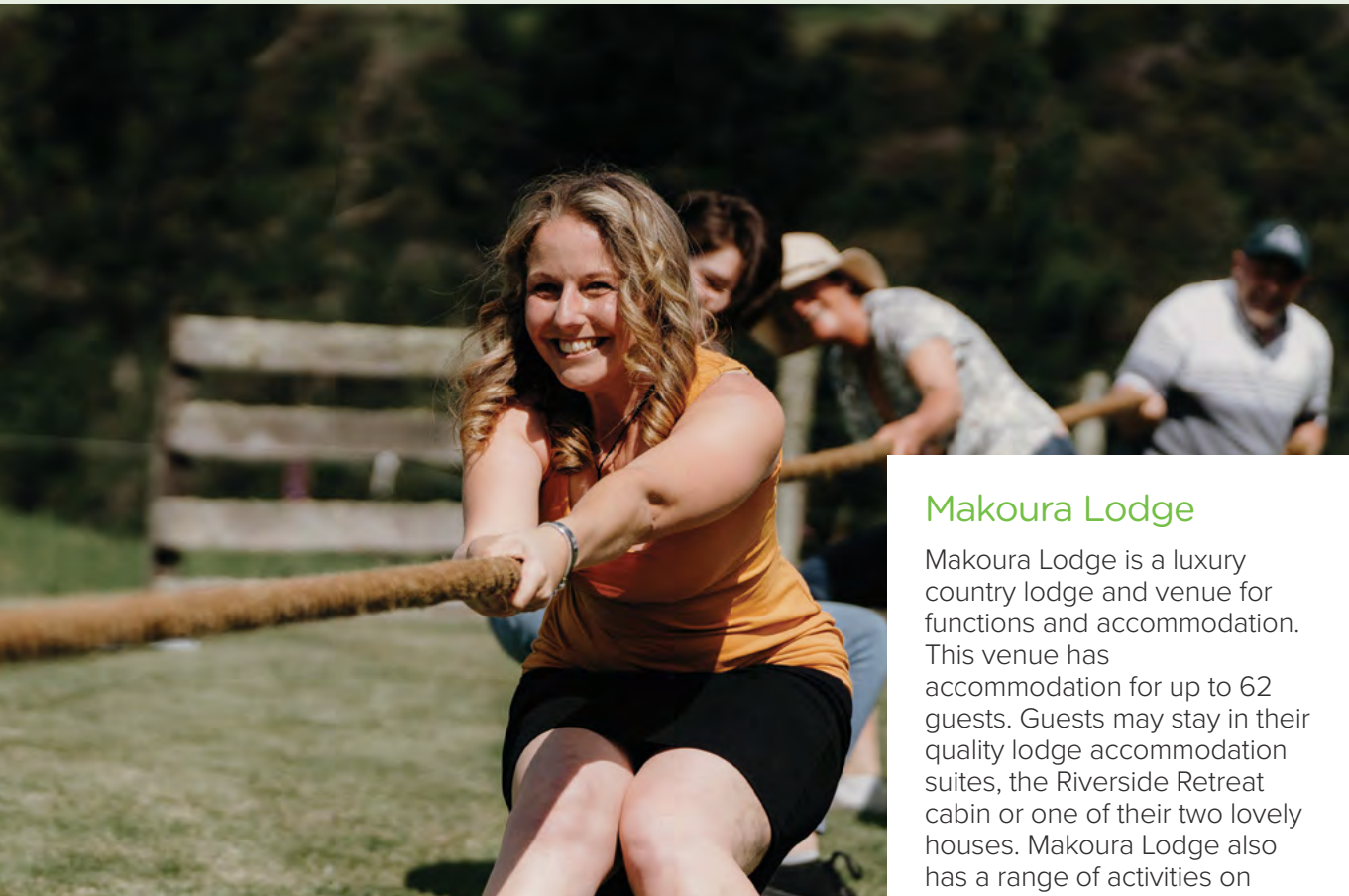




### Awapuni Function Centre

The Awapuni Function Centre overlooks the historic racecourse with spectacular views across the Tararua Ranges and windfarm. This premier venue can host multi-day conferences and meetings that require breakout rooms, host dinners, trade show presentations and cocktail functions all under one roof. With caterers and event experts on-site to assist with planning your event, it's sure to be a success. The centre is a short 10-minute drive from Palmy's city centre.

Theatre	U-Shape	Boardroom	Classroom	Banquet
700	90	104	400	550



### Makoura Lodge

Makoura Lodge is a luxury country lodge and venue for functions and accommodation. This venue has accommodation for up to 62 guests. Guests may stay in their quality lodge accommodation suites, the Riverside Retreat cabin or one of their two lovely houses. Makoura Lodge also has a range of activities on offer from horse trekking to clay bird shooting and archery.

Theatre	U-Shape	Boardroom	Classroom	Banquet
100	40	40	60	-



### Feilding Civic Centre

The Feilding Civic Centre is a multi-purpose venue in central Feilding. It consists of three spaces including a concert chamber, stadium and meeting room. The Centre has been an important part of the local community since the 1950s and was recently refurbished.

Theatre	U-Shape	Boardroom	Classroom	Banquet
716	200	100	250	500



### Distinction Hotel & Conference Centre

This elegant 4-star hotel has everything to offer in one place. Only minutes from Palmy's city centre, you will find everything conveniently accessible and within a short walking distance. The five-storey hotel has 85 well-appointed accommodation rooms to suit any traveller. The hotel offers four meeting rooms, a private cocktail bar and extensive on-site professional conference coordination services. You are sure to be looked after with a helping hand every step of the way, whether it's for smaller groups or 500 guests.

Theatre	U-Shape	Boardroom	Classroom	Banquet
500	60	40	150	350



### The Factory

Located just minutes from Palmy's city centre, near Massey University, The Factory offers up-to-the-minute technology and divine barista-made coffee. The Factory's two rooms can be used individually or joined to create one larger space with multiple room configurations.

Theatre	U-Shape	Boardroom	Classroom	Banquet
40	15	12	24	-



### Palmerston North Golf Club

The function facilities at the Palmerston North Golf Club provide a perfect setting, with picturesque views of the golf course. The Club's function room is a flexible venue which can cater from 10 to 220 people. With many breakout spaces (both inside and out), a fully licensed bar, a dance floor and a full on-site catering team, the Golf Club is a great venue for your next conference or function. This venue also boasts plenty of free car parking, a large deck looking over the course, and the option of a full corporate golf day.

Theatre	U-Shape	Boardroom	Classroom	Banquet
200	40	-	80	140





### The Cooperage Café & Conference Centre

With seating for up to 80 people theatre style or 60 people seated at tables, the Cooperage Café & Conference Centre has everything to impress. The centre features air conditioning, a licensed bar, on-site catering and free parking.

Theatre	U-Shape	Boardroom	Classroom	Banquet
80	-	20	50	40



### PBB Conference Venue

PBB offers fantastic semi-rural meeting facilities in the heart of Feilding. The rooms include a boardroom that comfortably seats up to 40 people theatre style or 16 people boardroom style, plus two meeting rooms each seating four people around a table.

Theatre	U-Shape	Boardroom	Classroom	Banquet
40	-	16	-	-



### Te Manawa

As the cultural heart of the city, Te Manawa draws art, science and history together, recognising the uniqueness of each area and reflecting our growing region and its people. Te Manawa offers venue hire for varied events including meetings, conferences and presentations, as well as small cocktail functions and dinners.

Theatre	U-Shape	Boardroom	Classroom	Banquet
100	50	40	60	60



### Bella Vista

Bella Vista offers a private, quiet and convenient on-site and self-contained venue close to Palmy's city centre. With a capacity of 30 people theatre style or 18-20 people boardroom style, the room is ideal for small conferences, meetings, interviews or tradeshow.

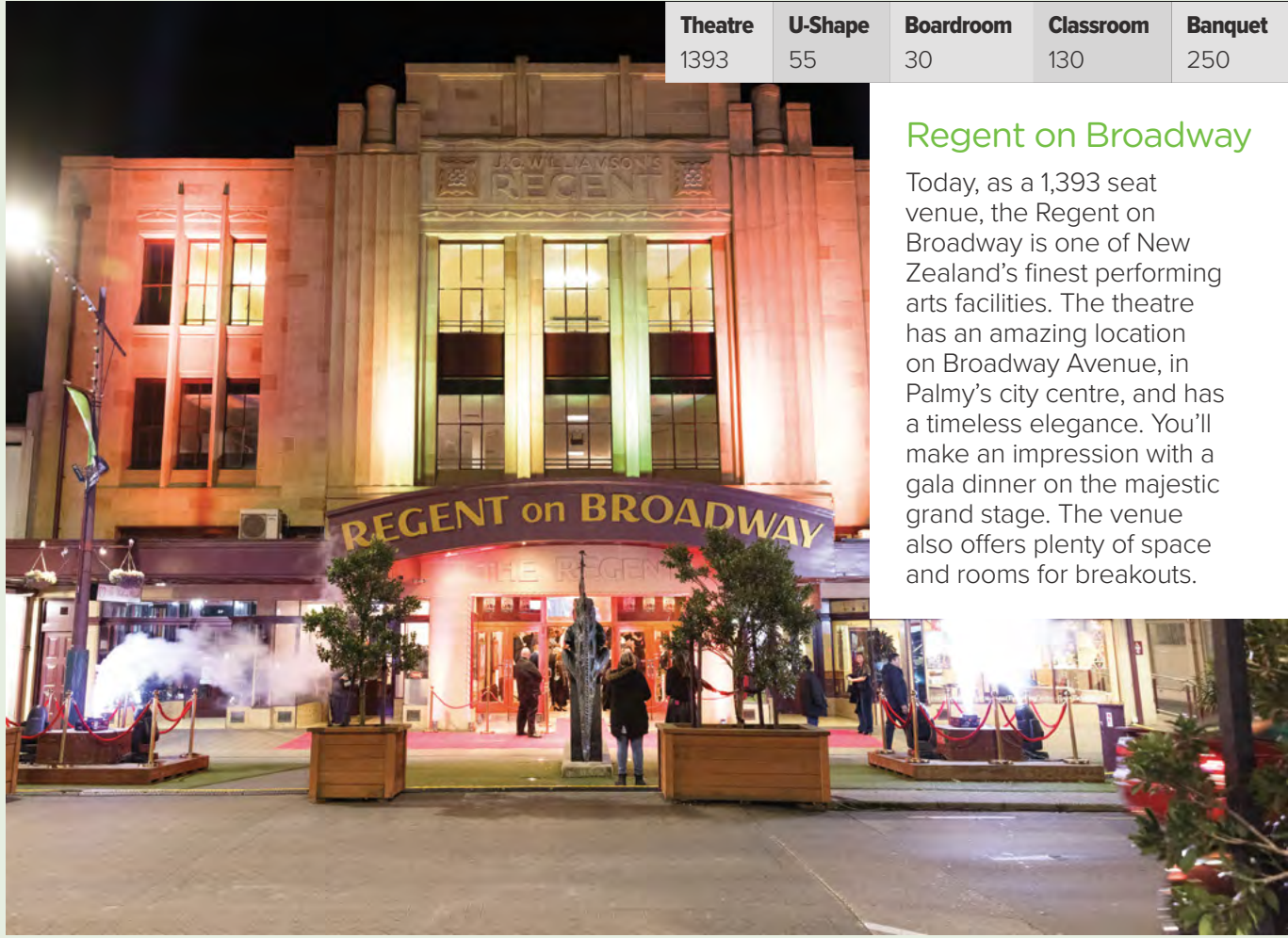
Theatre	U-Shape	Boardroom	Classroom	Banquet
30	-	20	16	-



### Shadzz

The Shadzz conference/meeting room is ideal for meetings, training, employee interviews, exams, presentation, or trade displays. The room has a capacity for 20 people boardroom-style or 40 people theatre-style.

Theatre	U-Shape	Boardroom	Classroom	Banquet
40	-	20	-	-



Theatre	U-Shape	Boardroom	Classroom	Banquet
1393	55	30	130	250

### Regent on Broadway

Today, as a 1,393 seat venue, the Regent on Broadway is one of New Zealand's finest performing arts facilities. The theatre has an amazing location on Broadway Avenue, in Palmy's city centre, and has a timeless elegance. You'll make an impression with a gala dinner on the majestic grand stage. The venue also offers plenty of space and rooms for breakouts.



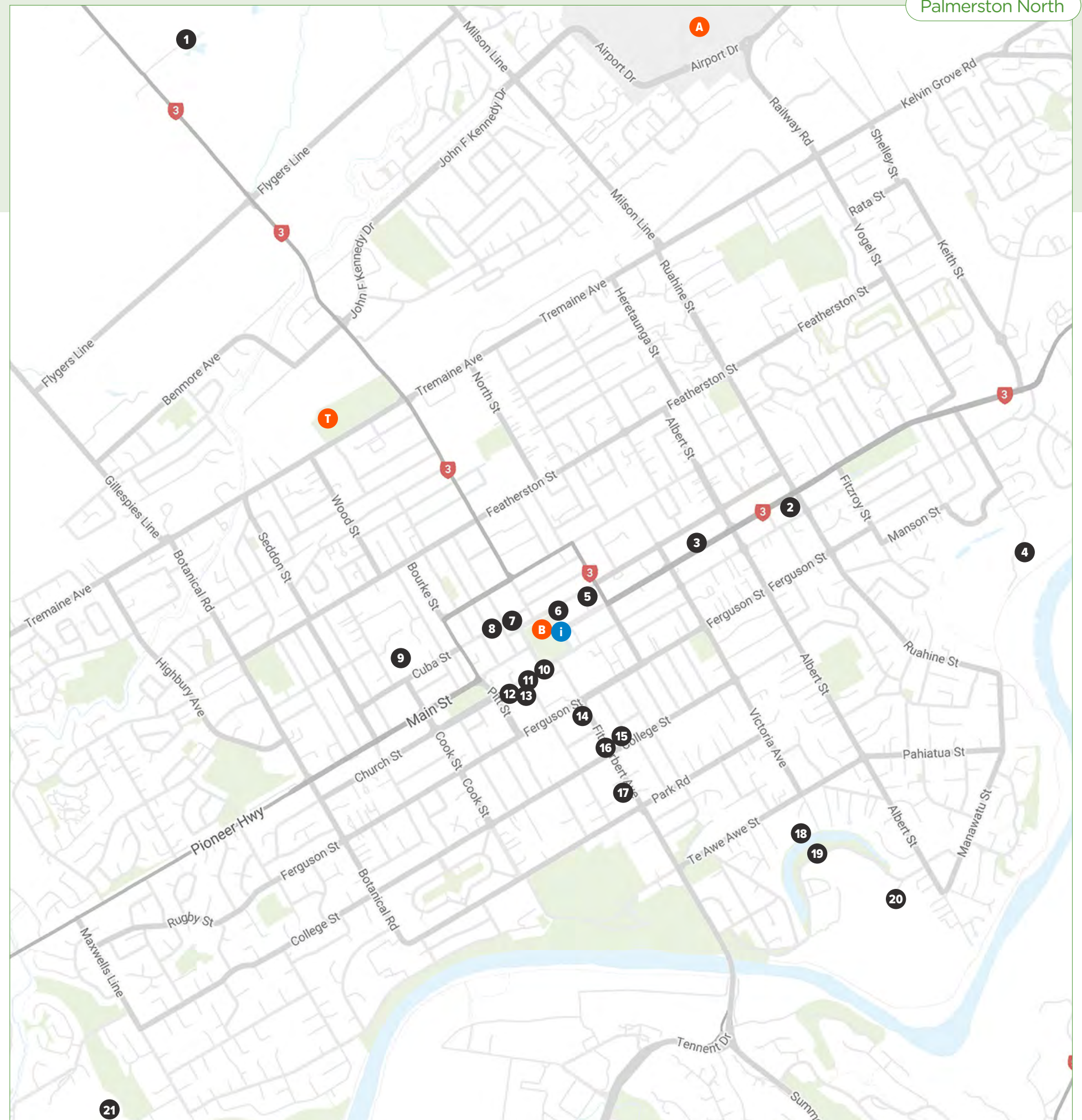
# Find your next venue

- 1 Orlando Country
- 2 The Cooperage Café & Conference Centre
- 3 Two 36
- 4 Palmerston North Golf Club
- 5 Regent on Broadway
- 6 Victory Venue
- 7 Focal Point
- 8 Distinction Hotel
- 9 Central Energy Trust Arena
- 10 Palmy Conference + Function Centre
- 11 Te Manawa
- 12 The Globe Theatre
- 13 New Zealand Rugby Museum
- 14 Copthorne Hotel
- 15 Shadzz Motel and Conference Centre
- 16 Distinction Hotel Coachman
- 17 Bella Vista Palmerston North
- 18 Caccia Birch
- 19 The Chalet
- 20 Manawātū Golf Club
- 21 Awapuni Function Centre

On following page:

- 22 Feilding Civic Centre
- 23 PBB Conference Venue
- 24 Manfeild Park
- 25 The Factory
- 26 Wharerata
- 27 Massey University Sport and Rugby Institute
- 28 Makoura Lodge

- T Palmerston North train station
- B Palmerston North bus station
- A Palmerston North airport
- i Palmerston North isite
- i Feilding & District Information Centre

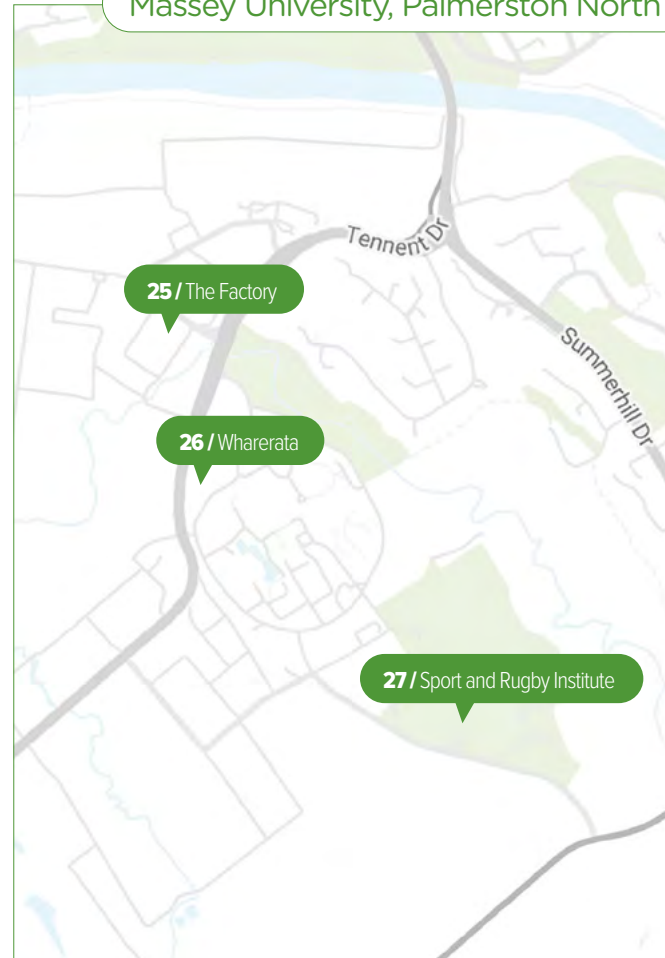




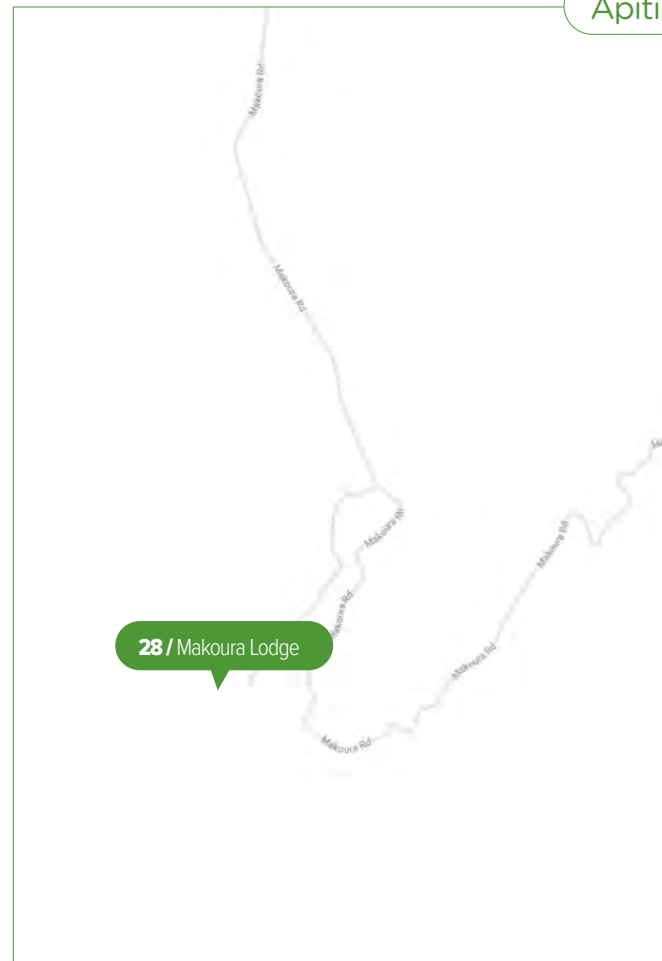
## Feilding



## Massey University, Palmerston North



## Āpiti



Food from Absolute Caterers at  
Palmy Conference + Function Centre



LGNZ Conference at  
Central Energy Trust Arena

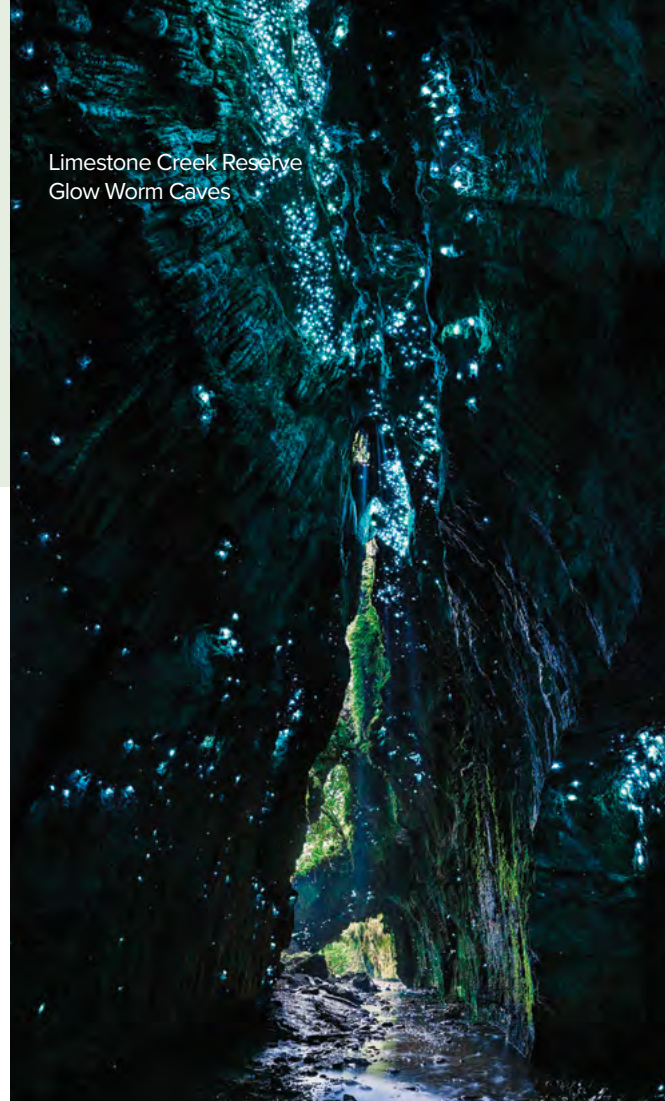


Manfeild Park





Limestone Creek Reserve  
Glow Worm Caves



# Discover our region

Shopping at Cameron Jewellery



## Limestone Creek Reserve Glow Worm Caves

Discover real middle earth and explore awe-inspiring caves and gorges. Formed by nature and one of Manawatū's best hidden gems, these stunning caves are host to glow worms that can be seen during the day but are best seen at night or at dusk. The full 600m adventure will take you through caves, spectacular gorges and across a running stream.

## Arapuke Forest Park Trails

Ride to your heart's content through a network of over 30kms of epic mountain bike trails at Arapuke park. The lower North Island's premier mountain bike park is home to a growing network of tracks and trails, from Grade 2 to Grade 6.

## Alchemy & I

Alchemy & I salon and spa offers everything from innovative hair experiences to invigorating beauty treatments, complete with cocktails made in their fully-licensed bar. They have everything you need to look and feel glamorous. Whether you're after some 'me time' or want to share the experience with friends, indulge yourself!

## The Herb Farm

The Herb Farm is a family owned and operated business that creates 100% natural skincare and health products - free of synthetics and chemical nasties. Journey to their café to unwind and enjoy delicious fresh food in the tranquil garden setting. While you're there, go for a wander in their themed gardens to discover fairies, gnomes and other magical surprises.

## Te Āpiti – Manawatū Gorge Track

Nestled between two mountain ranges, there are few places in New Zealand where within 12 minutes from a major city you can enjoy one of our country's most iconic natural playgrounds. Covered in ancient bush and home to a variety of wildlife, Te Āpiti – Manawatū Gorge is steeped in legend and has many stories to tell. Explore the walking tracks and you'll come face to face with the sculpture of Whātonga, an ancient warrior who stands guard over the forest.

## Boutique shopping

From clothing to art, books to jewellery, you'll find off the-beaten-path shopping spots dotted throughout Palmy and Manawatū. With plenty of handmade products and unique bespoke pieces to discover around the region, shop our independent boutiques, pick up all the major brands or be a little boujie and buy artisan fare directly from farmers' market stalls.

## Focal Point Cinema

Focal Point is a boutique movie theatre complete with a fully licensed café with locations in both Palmy and Feilding. Enjoy watching a movie in luxury with reclining leather seats or cosy up to a partner on a two-seater couch. Elevate your cinema experience with Focal Point's delicious menu of cinema snacks and range of premium wines and beers.

## Explore our pathways

Whether you're looking for a short stroll close to Palmy city, or you're keen to stretch your legs further out in the region, we have plenty of must-do walks. Take a wander through ancient native bush, groves of kahikatea and tōtara, riverside beauty, high-altitude tussock country, or through magnificent gorges – Manawatū's trails are full of surprises. So strap on your boots, pack some snacks and get set for an adventure.

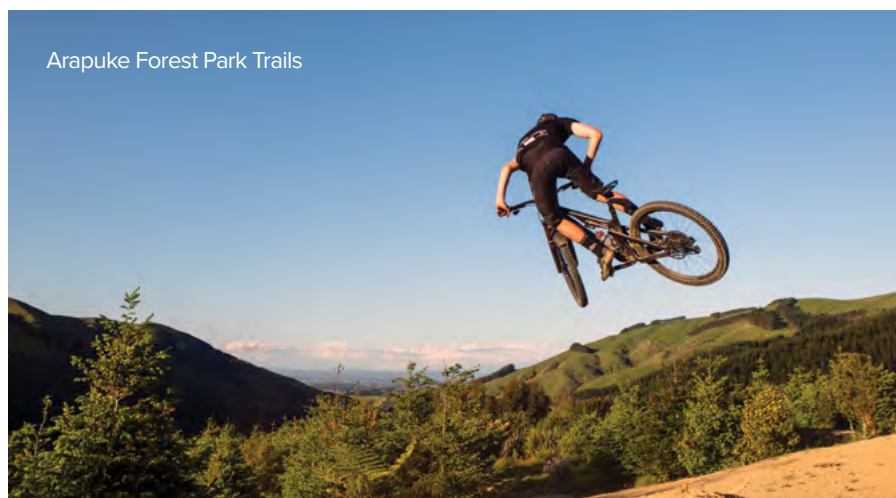
Turitea Pā



Alchemy & I



Arapuke Forest Park Trails





# Taste your way around

With over 200 bars, restaurants, bakeries and cafés there really is something for everyone. If you crave farm-to-plate, our region is sure to be your jam. Here you'll find an abundance of foodie delights all within just a few kilometres. From fine dining and gourmet indulgence to traditional dishes from around the world, you'll never be far from a meal that suits your taste and budget. You'll find yourself spoilt for choice by the region's diverse range of international fare.

## Āpiti Tavern

Meet the locals and their famous low, slow and smoked range of meaty meals. Soak in the relaxing rural surroundings while feasting on their classic kiwi cuisine.

## Libre

Libre is Palmy's Mexican inspired restaurant and bar, offering Mexican inspired fare including tacos, cocktails, tequila and mezcal.

## Amayjen (pronounced Imagine)

Experience the perfect night out in Palmy at Amayjen. Ultra-fresh produce is prepared with expert attention to detail. It has to be seen to be believed and a perfectly chosen wine list sits alongside.

## Saigon Corner

At this healthy and modern eatery, you'll taste the freshest herbs and ingredients to give you the most authentic flavours of Vietnam.

## Little Savanna

Little Savanna was created from a passion for great food and a wonderful dining experience, where the finest of New Zealand's produce is cooked the South African way – flame grilled.

## The Strong Room

Famous for their private bank vault dining experience, The Strong Room restaurant and bar is in the heart of friendly Feilding. Enjoy mouth-watering pub food with that unmistakable NZ twist.

## GAON

For a do-it-yourself dining experience head to GAON and order one of their Korean BBQ meat seats. The chef will bring a small charcoal grill to your table with a selection of raw meats and guide you through the best way to cook and flavour your meat. For an impressive dining experience from start to finish, this is the place to be.

## Brew Union Brewing Co

Brew Union Brewing Co has a selection of house beers that are freshly brewed onsite. Their pizzas are hand stretched and cooked to perfection in a wood fired oven.

## The Fat Farmer

The Fat Farmer delivers distinctive, modern cuisine, bite upon bite. An abundance of locally sourced produce has been intricately woven into their menu by world class chefs, providing a variety of mouth-watering temptations for even the most refined palate.







Destiny on Fitzherbert



Distinction Coachman Hotel



Copthorne Hotel Palmerston North



Chancellor Motor Lodge



Quest Palmerston North

# Accommodation

Whether you're here on business or looking for a place to recharge, we've got everything from boutique lodges to luxurious hotels.

These tables outline some of the accommodation options available in Palmy and Manawatū. Additional hotels, motels, farm stays, lodges, campgrounds and B&Bs are available within the region.

For a full list of accommodation providers please email [conference@pncc.govt.nz](mailto:conference@pncc.govt.nz)

Hotels	Rooms	Capacity
Copthorne Hotel Palmerston North	76	152
Distinction Coachman Hotel	73	217
Distinction Palmerston North Hotel	85	244
Quest Palmerston North	41	91
Quality Suites Central Square	40	100
	<b>315</b>	<b>804</b>

Motels	Rooms	Capacity
Aubyn Court Spa Motel	30	90
Avenue Motel	13	32
Bella Vista Motel	18	40
Big Five Motel	14	46
Destiny on Fitzherbert	21	45
Pavilion Motel	17	34
Rose City Motel	26	77
Shadzz Motel	14	38
	<b>153</b>	<b>402</b>

Motor Lodges/Inns	Rooms	Capacity
A-Abode Motor Lodge	20	67
Arena Lodge	16	74
Bentleys Motor Inn	26	82
BKs Motor Lodge	43	70
Braemar Motorlodge	28	59
Camelot Motor Lodge	20	44
Chancellor Motor Lodge	18	38
City Corporate Motor Inn	12	28
Cornwall Motor Lodge	28	90
Drovers Motor Inn	27	50
Fitzherbert Regency Motor Lodge	20	56
Hacienda Motor Lodge	17	50
Harringtons Motor Lodge	14	40
	<b>289</b>	<b>748</b>





# We're here to help

The Manawātū Convention Bureau is here to help you create a world-class experience for your delegates. We make finding the best venues, hotels and exclusive activities easy, by connecting you with the industry experts that will help organise your event.

## Let us save you time with:

- Free, impartial advice about venues, hotels and transport
- A bespoke proposal to meet your needs
- Creative ideas for delegate activities and entertainment
- Group housing and accommodation
- Incentive and reward ideas for clients
- Stunning imagery of the region to help promote your event

Find out what's happening and what's new in the Manawātū with our updates. Register for updates at [bit.ly/ManawatuUpdates](https://bit.ly/ManawatuUpdates)

## Get in contact with us today

**Manawātū Convention Bureau**  
027 568 4518 / [conference@pncc.govt.nz](mailto:conference@pncc.govt.nz)  
[ManawatuNZ.nz](https://ManawatuNZ.nz)



