

# ACTIVITY RECOMMENDATIONS // IN MANAWATŪ



## Manawatū and Palmerston North offer a diverse range of activities for groups, families, couples and solo travellers, all within and just a short distance from Palmerston North city.



Location



Contact  
Details



Family  
Friendly



Group  
bookings



Couples



Solo  
Travellers



### WOOLSHED HERITAGE WALK

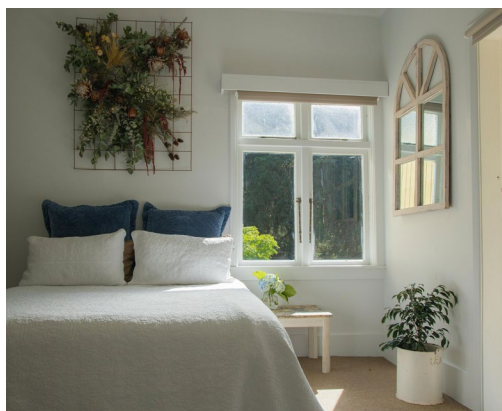


2861 State Highway 1,  
Sanson



[thewoolshedcafe@xtra.co.nz](mailto:thewoolshedcafe@xtra.co.nz)

Step back in time and learn about life in Aotearoa, New Zealand from 1860 through to 1960. Explore seven heritage houses on a 90-minute audio guided tour, and enjoy lunch at the Woolshed cafe.



### RANGITIKEI FARMSTAY



422 Makuhou Road,  
Marton



[www.rangitikeifarmstay.co.nz](http://www.rangitikeifarmstay.co.nz)

Guests are treated to an authentic experience on a working sheep and beef farm. Learn about New Zealand farming, see the working vegetable gardens and get up close with farm animals. Enjoy a locally sourced group meal using seasonal ingredients.



### NEW ZEALAND RUGBY MUSEUM



326 Main Street,  
Palmerston North, 4410



[www.rugbymuseum.co.nz](http://www.rugbymuseum.co.nz)

Take a guided tour of the New Zealand Rugby Museum where stories and mementos of our favourite pastime are shared. Get to know some of the iconic players over the last 50+ years and hear some of the inside stories of controversies and tragic twists suffered by some.





## STEWART DAIRYLANDS



465 Ashhurst Road,  
Manawatū



[www.stewartdairylands.nz](http://www.stewartdairylands.nz)

Tour Stewart's 600 hectare working farm with the owner Dave Stewart. Situated just 10 minutes from the city of Palmerston North, guests receive an overview of real-life farming in New Zealand and learn of environmental and restoration efforts underway. A gourmet barbecue lunch can be included.



## AWASTONE



143 Ruahine Road,  
Mangaweka, 4746



[www.mangaweka.co.nz](http://www.mangaweka.co.nz)

Take to the Rangitikei River with Awastone. Best known for family rafting and safe white water kayaking trips, just five minutes off SH1, Awastone has a licensed cafe, two riverside campgrounds and cabin accommodation.



## THE HERB FARM



86 Grove Road,  
Palmerston North, 447



[www.herbfarm.co.nz](http://www.herbfarm.co.nz)

Enjoy a herbal healing workshop and garden tour, where you'll learn all about the magic of botanical simplicity. Create a healing cream using herbal extracts made from the herbs sourced from the garden, and savour delicious hand-crafted meals from the on-site cafe.



## WILDBASE RECOVERY CENTRE



20 Victoria Esplanade  
Drive, Palmerston North  
4410



[www.wildbaserecovery.co.nz](http://www.wildbaserecovery.co.nz)

Connect with nature and learn more about Aotearoa's native wildlife with educational facilities and tours where you can meet the resident animals and patients rehabilitating after treatment at Massey University's Wildbase Hospital. The interactive educational area is perfect for children of all ages and grown-ups too.



## CACCIA BIRCH HOUSE



130 Te Awe Awe Street,  
Hokowhitu 441



[manager@caccia-birch.co.nz](mailto:manager@caccia-birch.co.nz)

The house is a majestic Historical Places Trust Category One listed property, perched high on the bank of the Hokowhitu lagoon. Set in amongst three acres of established gardens including notable historic trees. Group bookings are an ideal way to explore this icon of Palmerston North's heritage.



WEBSITE //  
**MANAWATUNZ.CO.NZ**

FACEBOOK //  
**PALMY &  
MANAWATŪ**

INSTAGRAM //  
**@MANAWATU\_NZ**  
**#THISISMANAWATU**

EMAIL //  
**INFO@CEDA.NZ**

PHONE //  
**+64 6 350 1830**