



THE FULL  
DOWNLOAD  
OFFICIAL  
VISITOR  
GUIDE // 2025



# FOOD GLORIOUS FOOD.



## EATS + TREATS //

Smash a burger, sip a short black, stock up on superfoods or go all out for a night of evening dining // Manawatū has your cravings covered.

## WALKS + TRAILS //

Send it down one of our legendary trails. Whatever your taste – from technical to fast flowing to easy rollers, we've got the lot.

# SHRED SOME TRAIL.



## CULTURE + MUSEUMS //

Stroll art filled city streets, be inspired by local culture and connect with your creative side. Galleries, museums, exhibitions and shows, we've got palette loads of creative flair.

# SHARE OUR STORY.



# SPLISH SPLASH.

## BEACHES + PARKS //

Hit our beaches, mountain ranges and winding rivers. Our landscapes are raw, rugged and real, and they're uniquely ours - enjoy the journey.

## BOUTIQUES + MARKETS //

Spend more than time here. Sample produce from market stalls, shop sustainably, and browse our endless array of independent boutiques.

# SHOP SUPER LOCAL.



## BARS + BREWS //

Enjoy cocktails in corner bars, craft beer in city courtyards or your choice of tippie from a traditional country pub. The drinks are cold, and the locals are friendly.

# HIT THE BAR.





**MANAWATŪ –  
HE WHAITUA  
RONGONUI O  
AOTEAROA, HE  
WAIRUA MATAKUIKUI,  
HE ARONGA AUAHA,  
TAPATAPAHI ANA!**

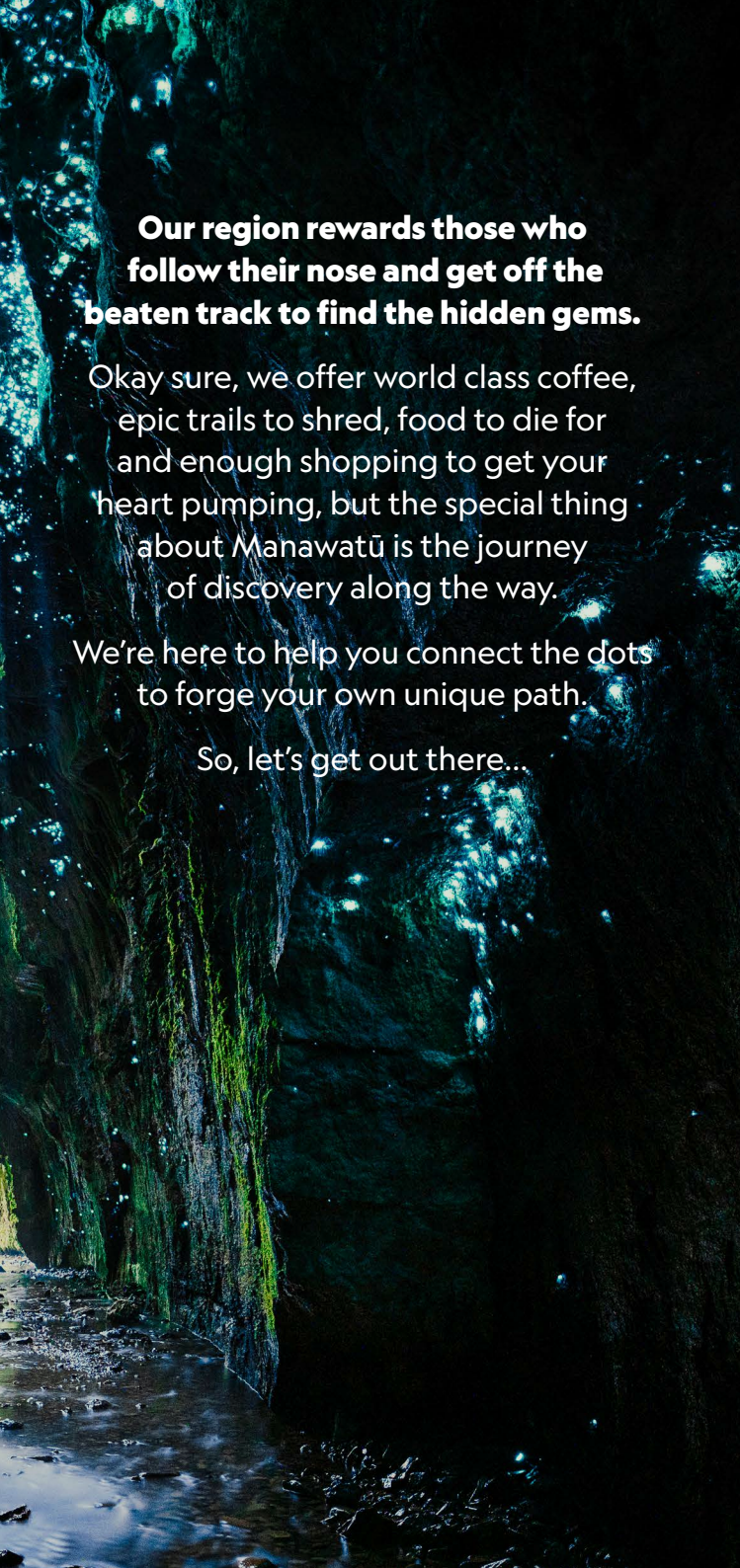


**MANAWATŪ –  
A LEGENDARY LAND OF  
AOTEAROA, FULL OF  
SPIRIT AND JOY, WITH  
A CREATIVE BEND.**



LIMESTONE  
CREEK



A vertical photograph of a dark, atmospheric forest scene. In the foreground, a stream flows over rocks, its surface reflecting light. The banks are covered in moss and small, glowing blue and green lights, possibly fireflies or bioluminescent plants. The background is dark and textured, with more glowing lights scattered throughout, creating a magical and mysterious atmosphere.

**Our region rewards those who  
follow their nose and get off the  
beaten track to find the hidden gems.**

Okay sure, we offer world class coffee,  
epic trails to shred, food to die for  
and enough shopping to get your  
heart pumping, but the special thing  
about Manawatū is the journey  
of discovery along the way.

We're here to help you connect the dots  
to forge your own unique path.

So, let's get out there...

TAIOPENGA /  
 MIRAMIRA //  
 FUN WITH TH  
 GETAWAY WITH  
 THE COUNT  
 TAI AO /  
 E KORI /  
 MA  
 TE TOI ME TE AHUREA /  
 HOKOHOKO /  
 INĀ TE REKA /  
 NOHO MAI /



Family  
Friendly



Dog  
Friendly



Camping



Location



Time To  
Allow



Open  
Hours

// **EVENTS** 08

**HIGHLIGHTS** 10

**THE WHĀNAU** 12

**YOUR AROHA** 14

**TRIP ROAD** 16

// **NATURE** 18

// **ACTIVE** 34

**PS** 51

// **ARTS & CULTURE** 64

// **SHOP** 76

// **TASTE** 82

// **STAY** 90



Fishing



Swimming



Tenting



Fitness  
Level



Entry



Contact  
Details



# MARAMATAKA // CALENDAR

Unlike any other city we have a downtown speedway slap-bang in the centre of the city, and that's only for starters.

Once you lift the lid, our region is chock-a-block full of cool stuff. Bustling markets, fairs, festivals, sports, arts and concerts plus heaps of fab foodie spots to keep you fuelled.



## FESTIVAL OF CULTURES

// FEBRUARY



## FORD RANGER RURAL GAMES

// MARCH



## KIMBOLTON SCULPTURE FESTIVAL

// APRIL



## PALMY DRAG FEST

// OCTOBER

## MANAWATŪ GARDENS FESTIVAL

// NOVEMBER



## SALUD! FEST

// OCTOBER

## PUANGA FESTIVAL

// JUNE



## A WINTER'S DAY OUT

// JULY



## ARTS TRAIL MANAWATŪ

// OCTOBER

## CROSS HILLS GARDENS COUNTRY FAIR

// NOVEMBER



## MAGIC OF CHRISTMAS NIGHT MARKET

// DECEMBER

# MIRAMIRA

## TE ĀPITI - MANAWATŪ GORGE

//P41,42 & 70



## HĪMATANGI BEACH

//P20



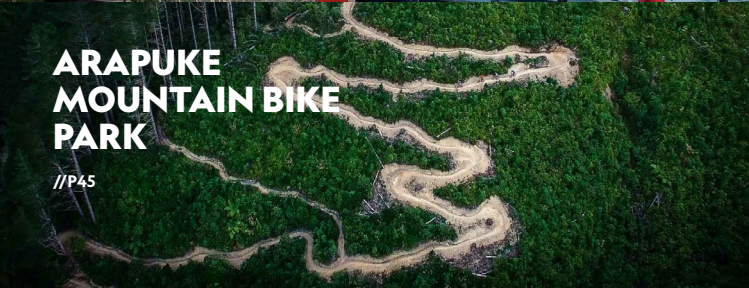
## HE ARA KOTAHI, HEI ARA KŌRERO

//P71



## ARAPUKE MOUNTAIN BIKE PARK

//P45



## THE COASTAL ARTS TRAIL

//P75





# HIGHLIGHTS



## FEILDING FRIDAYS

//P80



## CENTRAL ENERGY TRUST WILDBASE RECOVERY

//P30



## RANGIWAHIA HUT TRACK

//P44



## TE MANAWA & NEW ZEALAND RUGBY MUSEUM

//P66



## MANAWATŪ SCENIC ROUTE

//P16 & 54

# FUN WITH THE

**Need a helping hand to plan your visit? Check out our whānau itinerary.**

**0800 //** Wake up refreshed at **The Last Church in Āpiti**. A renovated Sunday School, this is the ultimate place to escape and relax with a roaring woodburner, outdoor bath and plenty of fresh northern Manawātū air.

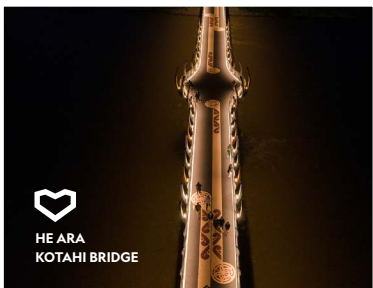
**0930 //** If your whānau loves a challenge, make sure to take the short drive down the road to **Makoura Lodge**. Human sheep dog trials, axe throwing, horse treks and 4WD safari. It's a little bit extraordinary.

**1200 //** Hop in the car and take a cruise into Palmy, along one of **The Country Road** scenic driving routes. Treat yourself to lunch at **Cafe Cuba** with a selection of Kiwi classics, a cabinet filled with the best in baked goods and exceptional New Zealand coffee. For the kids, they offer a full children's menu to fill their bellies.

**1330 //** Once the batteries are recharged, make a stop at the **Central Energy Trust Wildbase Recovery Centre** in Victoria Esplanade. Here, friendly guides will teach you about Aotearoa's native animals, the struggles they face, their significance to Māori and the passionate people who work to save them.

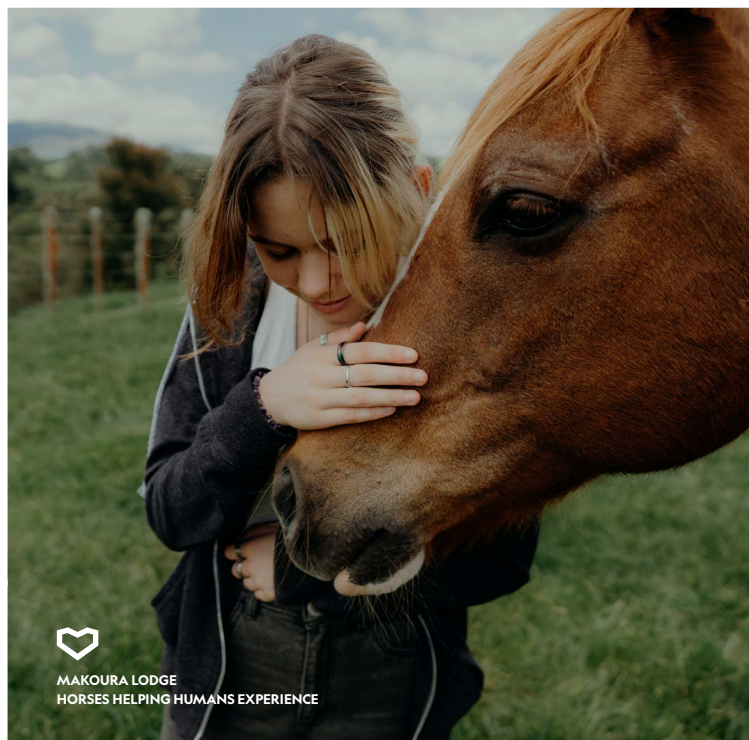
Continue exploring **Victoria Esplanade**, starting with the **Junior Road Safety Park** where kids will love practicing their road knowledge and cycling skills. Alternatively, hop on your bikes and cycle along the **Manawātū River Pathway** and across the new **He Ara Kotahi** bridge, engaging with **He Ara Kotahi, Hei Ara Kōrero** along the way. If it's a wet day, we've got you covered with a trip to **Cloud 9 Trampoline Park** where the kids can spring into action or stop in at **Te Manawa Museum** to get hands-on in one of the interactive learning discovery spaces.

**1800 //** The perfect end to a Palmy day with your whānau is to enjoy delicious woodfire pizza at **Pompeii Pizza**. The kids will be entertained with a small piece of dough while you wait which can be woodfired for a snack later on.





# THE WHĀNAU





# GETAWAY WITH



# H YOUR AROHA



TE ĀPITI -  
MANAWATŪ GORGE

Whether you're here for relaxation or reconnection, or a little bit of both, a break in Manawātū will leave you feeling refreshed. Whatever love language you speak, we have you covered.

**0800 //** Wake up to views of beautiful rolling countryside at **Ridge Top Farm Glamping** and listen in on the welcoming gurgle of neighbouring magpies. Savour breakfast made specially for you by your hosts, and soak in the outdoor bathtub - you'll truly feel the spirit of Manawātū.

**0930 //** After a blissful start to the day, hop in your car and head to **Te Āpiti - Manawātū Gorge**. Here, you can choose from one of the three walking tracks that take you through an immersive native bush as you climb up to spectacular views over the Gorge and across the region.

**1230 //** When you're all walked out, make your way to **The Herb Farm** where you'll find a natural oasis just outside of Ashhurst. Unwind from the morning's activities while enjoying delicious fresh food. After lunch, wander around the gardens and browse their range of natural beauty, healing, and therapeutic products.

**1400 //** Take in a couples massage at **Studio 31's** day spa then head to **Centrepont Theatre** to lose yourselves in an entertaining performance from talented local and international actors.

**1900 //** End your day on Broadway Avenue at **Haru Japanese Restaurant**, savouring fresh Japanese cuisine. From a traditional Japanese multi-course dinner, to Haru zensai platters and bento boxes, you won't be disappointed as you savour each mouthful washed down with a plum wine or splash of sake.

**2100 //** Sticking around for a nightcap? Take a stroll a few doors down to **Brew Union** and join in the electric atmosphere with a craft brew in hand.



STUDIO 31



BREW UNION

# THE COUNTRY

## FOLLOW THE MANAWATŪ SCENIC ROUTE

Get out of town  
and bathe in  
nature on this  
serene journey



MANAWATŪ  
SCENIC ROUTE

## ROAM THE IRON GATES GORGE

Unplug in the quiet  
majesty of one of  
Manawatū's most  
remote corners

[irongates.co.nz](http://irongates.co.nz)



IRON GATES  
EXPERIENCE



# COUNTRY ROAD



## UNLOCK MANAWATŪ'S PEEP-O-DAY ROUTE

Chase the  
sunrise on  
this secret  
backcountry  
route

# PEEP-O-DAY ROUTE



WHITECLIFFS  
BOULDERS

## REBOOT YOUR SENSES ALONG THE STORMY POINT ROUTE

See for miles and  
get up close with  
ancient geology



# STORMY POINT ROUTE



STORMY  
POINT

# TAIAO



LIMESTONE CREEK  
GLOW WORM CAVES



## NATURE

### Enjoy nature's finest.

Manawatū means 'heart standing still' and when you get up into the Ruahine or Taranaki Ranges, you'll truly understand that meaning.

We're a region that mother nature has been very kind to. Manawatū boasts vast west coast beaches, beautiful rolling countryside and immersive native bush which are all doable between lunchtime and beer o'clock.

If you want to know more about our Taiao, scan the QR code for further information.



SCAN TO LEARN MORE

**TĀHUNA** 20  
// **BEACHES**

**PAPA TĀPUI** 21  
// **RESERVES**

**PAPA RĒHIA** 24  
// **PARKS**

**MĀRA PUKAHU** 26  
// **GARDENS**

**NGĀ ORA O TE TAIAO** 30  
// **WILDLIFE**

**SCENIC SPOTS FOR A SHOT** 32

# TĀHUNA // BEACHES



1

## HĪMATANGI BEACH



**Hīmatangi**  
Hīmatangi Beach Road

Get out of the city, and hit the beach. Just 30 mins from Palmerston North, this raw and rugged west coast beach is a top spot for fishing, walking, kayaking, wave watching and fish and chipping. Stay for a night or two at the award winning campground. The local store will keep you fueled, and it even does a flat white.

2

## FOXTON BEACH



**Foxton**  
Marine Parade

A true west coast beach. Catch snapper, kahawai, and gurnard, pitch a tent or park your van at the campground. Burning sunsets and long untouched stretches of coastline, you'll find you're right where you belong.



# PAPA TĀPUI // RESERVES



3

## AHIMATE RESERVE



**Palmerston North**  
End of Maxwells Line

The perfect Palmy summer spot. Paths to walk or cycle and a paradise for your pooch, with a fenced dog park and agility course. The best access is off Maxwells Line.

4

## LINKLATER RESERVE



**Palmerston North**  
Peter Hall Drive

Boasting the city's longest dual flying fox, a Cessna 421 plane playground, frisbee golf course, bike tracks and jumps, this reserve is a place for the whole whānau to enjoy. Dog friendly, it has wide open spaces and a network of pathways to explore.



5

## TŌTARA RESERVE REGIONAL PARK



**Pohangina**  
Churchill Road



+64 6 329 4708

Camp, walk and swim in one of the remaining examples of the ancient forests that once covered our region. Located in the vast Pohangina Valley, with plenty of facilities available, this stunning location is the best place to start if you want a taste of 'wild' Aotearoa while still retaining some creature comforts.



6

## VINEGAR HILL - PUTAI NGAHERE



**Waituna West**  
Vinegar Hill Road



+64 6 323 0000

Guarded by a mighty 300 year old tōtara tree, this popular spot is perfect for a picnic or a camping weekend away. Explore this beautiful 30 hectares by foot or kayak as it runs along the Rangitikei River and tapers into the hills on the other side.



7

## RUAHINE DRESS CIRCLE SCENIC RESERVE



Rangiwahia  
Lagoon Road



Named by early settlers after its resemblance to an opera house, this spot has been a local secret for over 100 years. Relax with the sounds of the waterfall as you cool off in the swimming hole. Discover the Swiss cheese-like formations of the soft grey papa rock as you walk upstream.



# PAPA RĒHIA // PARKS



8

## VICTORIA ESPLANADE



**Palmerston North**  
Victoria Esplanade Drive



**October to March:**  
9am - 9pm  
**April to September:**  
9am - 6pm

Set along the banks of the Manawatū River, this is a firm local favourite. The list is endless, there's bush walks, train rides, bird aviaries, bike tracks, BBQs, paddling pools, duck ponds, playgrounds, rose gardens, and a road safety bike park that the kids will just love. There's even an on-site cafe, where you can refresh and refuel.



9

## MEMORIAL PARK



**Palmerston North**  
Main Street East

Memorial Park, one of our city's largest parks, is where you'll find picnic spots, a fully accessible playground, a skating rink and pond to explore. The new splashpad sits next to the paddling pool and features the biggest supersoaker



10

## KOWHAI PARK



Feilding  
South Street

A great spot for a scenic picnic, Kowhai Park features a large duck pond, attractive rose gardens and a number of significant native trees such as Totorā, Matai and Kahikatea. The recently upgraded playground is large and perfect for young kids to burn off their energy after lunch!

# MĀRA PUKAHU // GARDENS



11

## DUGALD MACKENZIE ROSE GARDENS



**Palmerston North**  
Victoria Esplanade  
Drive



**October to March:**  
9am – 9pm  
**April to September:**  
9am – 6pm

Sitting pretty in the Victoria Esplanade, is the pride of Palmy - the world renowned garden of significance Dugald McKenzie Rose Gardens. Home to 5,000 varieties of rose, the gardens are multi-award winning, and you can even get married here.





12

## CACCIA BIRCH HOUSE & GARDENS



**Palmerston North**  
130 Te Awe Awe Street



**Groups please  
book ahead**



**manager@  
caccia-birch.co.nz**  
+64 6 357 5362

Lose yourself in your surroundings. Take a stroll around this classic Kiwi style garden, set in the grounds of a grand 1890s iconic homestead, overlooking Hokowhitu Lagoon in the middle of the city.



13

## GREENHAUGH GARDENS & NURSERY



**Palmerston North**  
914 Napier Road



**Monday - Friday**  
Weekends and groups  
by booking only



**lynne@  
greenhaugh.co.nz**  
+64 6 357 3878

Wander through the limestone paths that surround a spectacular 19th century homestead, and has been awarded the prestigious title of Garden of International Significance by New Zealand Gardens Trust. As you explore, you'll see a variety of colours from floral surroundings, including roses, lilies, and poppies to name a few. Check out the various plants and bulbs for sale and if you time your visit right, you might even get to feed a Spring lamb.



14

## THE HERB FARM



**Ashhurst**  
86 Grove Road

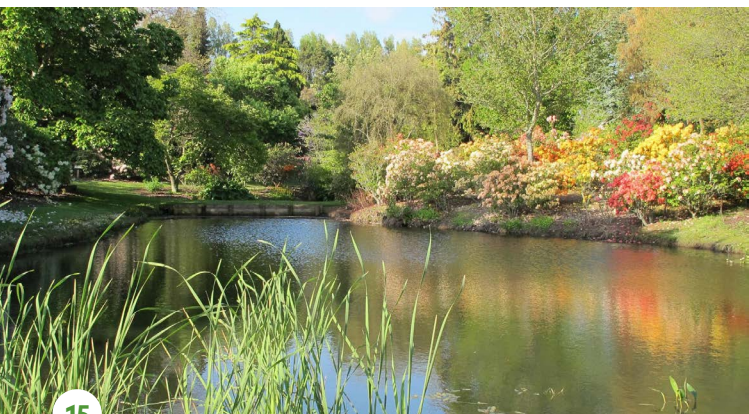


**10am – 4.30pm**



**info@  
herbfarm.co.nz**  
**+64 6 326 8633**

Developed in a co-creative partnership with nature, be surrounded by fourteen themed gardens that'll capture the hearts of all ages. Challenge your little ones to a quiz as they wander around and explore the gardens. Finish off your visit by browsing the unique products available in the retail store.



15

## HERITAGE PARK RHODODENDRON GARDENS



**Kimbolton**  
34 Haggerty Street



**Daylight to dusk**



**+64 6 328 5868**

Stroll along beside the rhododendrons in this Kimbolton garden. Home to over 2,000 rhododendrons, here you can enjoy a dazzling display of colour, before taking tea in their chalet.



16

## VILLA CANDOTTI

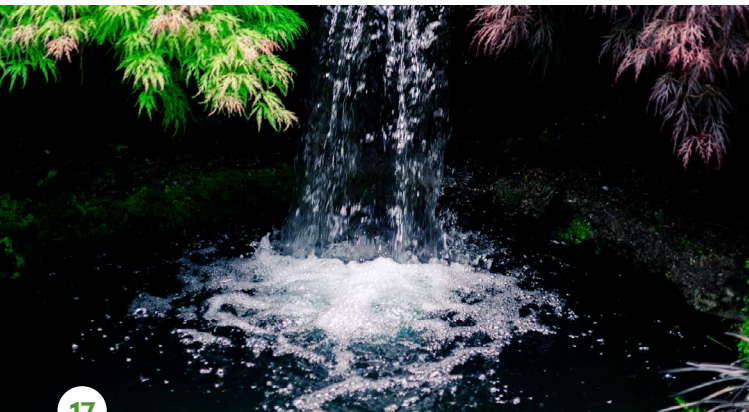


**Colyton**  
Reid Line East



**1 hour**

This stunning Italian inspired garden is set within the rural backdrop of Manawatū. These formal manicured gardens are a treat for the eyes, offering an air of romance as you meander through admiring the ponds, fountains and statues around every corner.



17

## CROSS HILL GARDENS



**Kimbolton**  
339 Rangiwahia Road



**Sept – May**  
10.30am – 5pm



**info@**  
**crosshills.co.nz**  
**+64 6 328 5797**

Ramble along beside the rhododendrons in this park-like garden in Kimbolton. Home to one of the world's finest collections of rhododendrons and azaleas, the gardens boast over 2,000 different varieties which put on a dazzling display of colour each spring.



# NGĀ ORA O TE TAIAO // WILDLIFE



18

## **CENTRAL ENERGY TRUST WILDBASE RECOVERY**



**Palmerston North**  
20 Victoria Esplanade  
Drive



**Free entry** (donations  
appreciated)



**info@**  
**wildbaserecovery.co.nz**  
**+64 6 356 8199**

See what's involved in caring for sick and injured native wildlife at Central Energy Trust Wildbase Recovery Centre. The centre cares for some of Aotearoa's most endangered species, where they rehabilitate after receiving treatment at Massey University's Wildbase Hospital before being released back into the wild. The facility is also home to a number of permanent residents for you to spot, such as kererū, kākā, and tuatara.

Learn and discover more about conservation issues, our culture, and connection to native wildlife through the completely bilingual facility. If you need a hand, one of the friendly volunteer visitor hosts are there to help!



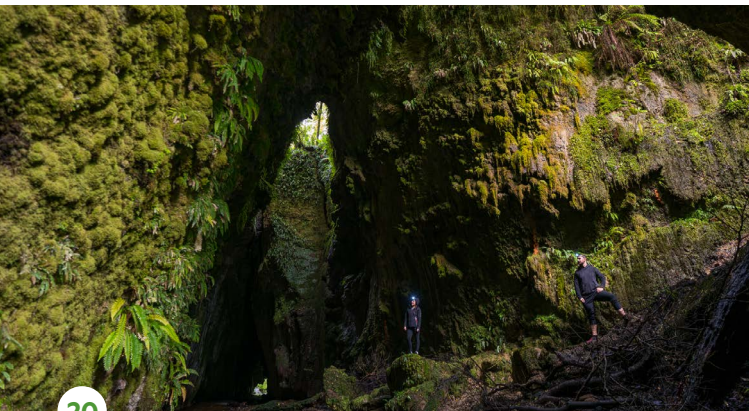
19

## URBAN EELS



**Palmerston North**  
He Ara Kotahi Pathway

A treasured spot at the end of the Turitea Stream. A stroll down the river path leads to this tuna (eel) safe haven. When the sun goes away the eels come out to play, so prime time for visiting these guys is around sunrise or sunset. Enjoy the colours around you as you learn why tuna are so important to Māori and the health of our waterways.



20

## LIMESTONE CREEK RESERVE GLOW WORMS



**Āpiti**  
Limestone Road

One of Manawatū's best kept secrets that we are delighted to share. Magical caves are carved out of rock by Papatūānuku (Mother Nature) herself. Best seen as a nighttime adventure - but if that doesn't suit your schedule, you can still see them glowing during the day. Be sure to bring a torch and your gumboots and take care with your footing!

# SCENIC SPOTS FOR A SHOT

From bridges to boulders, here are some of our most picture perfect places to capture your Manawatū moments.



## RANGIWAHIA HUT TRACK

RUAHINE FOREST PARK //  
RENFREW ROAD



## STORMY POINT LOOKOUT

WAITUNA WEST //  
CHELTENHAM-HUNTERVILLE ROAD





## HE ARA KOTAHĪ BRIDGE

PALMERSTON NORTH //  
129 DITTMER DRIVE



## TE ARAPIKĪ A TĀNE (THE STAIRWAY OF TĀNE)

PALMERSTON NORTH //  
VAUCLUSE HEIGHTS



## WHITECLIFFS BOULDERS

MANGAWEKA //  
535 PEKA ROAD

# KORE



ARAPUKE  
MOUNTAIN BIKE PARK



## ACTIVE

### Move your body, free your mind.

Get your blood pumping and harness the elements! Whether that's rafting down the Rangitikei, shredding some trails, treading our tracks or chipping your way around our golf courses, you'll find all the views are good here.

If you're looking for more adventures to tick off your bucket list, be sure to scan the QR code to uncover more inspiration for your action packed activities.



SCAN TO LEARN MORE

**MĀTĀTOA TŪ-A-NUKU** 36  
// **OUTDOOR ADVENTURES**

**ARA HĪKOI** 41  
// **WALKS AND HIKES**

**EKE PAHIKARA** 45  
// **CYCLING & MOUNTAIN BIKING**

**REKAREKA RŌWHARE** 49  
// **INDOOR FUN**

**HAHAUPŌRO** 60  
// **GOLF**

**WHAKANGAU, HĪ IKA** 62  
// **HUNTING & FISHING**



# MĀTĀTOA TŪ-A-NUKU // OUTDOOR ADVENTURES



21

## MAKOURA LODGE



Āpiti  
736 Makoura Road



By booking only



enquiry@  
makouralodge.co.nz  
+64 6 3284746

With views out across Manawatū, Makoura Lodge is the place to be if you're looking for an adrenaline fueled adventure. Try horseback riding, four wheel driving, clay bird shooting, give archery a go or shoot your shot with hole-in-one golf.



22

## OFF THE LOOP WAKEPARK



**Foxton**  
10 Stewart Street



**October to April:**  
Tuesday - Sunday  
**April to October:**  
Weekends Only  
10am - 5pm



**info@**  
**offtheloop.nz**  
**027 909 7950**

Test your wakeboarding skills on a private lake just 30 mins from Palmerston North. Handmade by the owners with performance, accessibility, comfort and fun in mind, challenge yourself with ramps and rail slides - or if it's your first time, build your skills on the flat, glassy water.



23

## RIVER VALLEY RAFTING



**Pukeokahu**  
Mangahoata Road



**8am – 5pm**  
Please book ahead



**thelodge@**  
**rivervalley.co.nz**  
**0800 248666**

Family owned and operated for three generations, River Valley Lodge is perched on the banks of the Rangitikei River, offering one of the best top half-day Grade 5 rafting trips. If you'd rather take the scenic route, they also offer float trips through the canyon with multi day options.



24

## RIVER VALLEY STABLES



**Pukeokahu**  
Mangahoata Road



**8am – 5pm**  
Please book ahead



**thelodge@**  
**rivervalley.co.nz**  
**0800 248666**

Learn the ways of natural horsemanship as you experience the ultimate freedom riding over farmland around the mountain, Pukeokahu. Most horses are ridden in halters and have personalities to suit all abilities, so if you've been riding since day one or you're a first timer, you'll find your perfect ride.





25

## MANAWATŪ BLOKART CLUB



**Sanson**  
State Highway One



**Saturday 1 – 4pm**  
**Sunday 2 – 4pm**



**manawatublokartclub**  
**@gmail.com**

Fun for the whole whānau, with plenty of thrills to be had, especially when the wind blows. Hire a cart for half an hour or the full hour and learn a new skill together.



26

## TABLE FLAT HORSE TREKKING



**Āpiti**  
331 Limestone Road



**8am – 5pm**  
Please book ahead



**tableflattrekking@**  
**gmail.com**

Enjoy views of Manawātū on horseback as you trek through native bush and incredible high altitude scenery on a 600 acre sheep farm. It doesn't matter if you're a first timer or a long-time rider, these treks cater for all and range from 45 minutes to 3 hours.



27

## AWASTONE



**Mangaweka**  
Ruahine Road



**8am – 8pm**



**info@**  
**mangaweka.co.nz**  
**0800 655 747**

Raft, kayak, and camp along the Rangitikei River with a 'stay and play' package. Kids as young as three years old can join in on the fun, so bring the whole whānau to spend the days on the river and nights hanging out together in the river cabins or parked up in your motorhome. Enjoy tasty meals during your stay at the onsite cafe and restaurant.



# ARA HĪKOI // WALKS AND HIKES



28

## TE ĀPITI - MANAWATŪ GORGE TRACK



### Ashhurst End

Car park at the Ashhurst end of the Manawatū Gorge

### Ballance End

Car park at 31 Gorge Road, Woodville



3 - 5 hours



Moderate fitness level

Home of native flora and fauna, Te Āpiti - Manawatū Gorge is a must-do walk in Manawatū. Journey along the main walking track (11.2km) and wind your way up high above the awa (river) below. Viewpoints are dotted along the way offering spectacular sights of the region from high above the trees. Come face to face with the sculpture of Whātonga, the ancient Māori Warrior who has been immortalised in a 6m tall sculpture along the track.





29

## TE ĀPITI – MANAWATŪ GORGE TAWA LOOP



**Ashhurst**  
1631 Napier Road

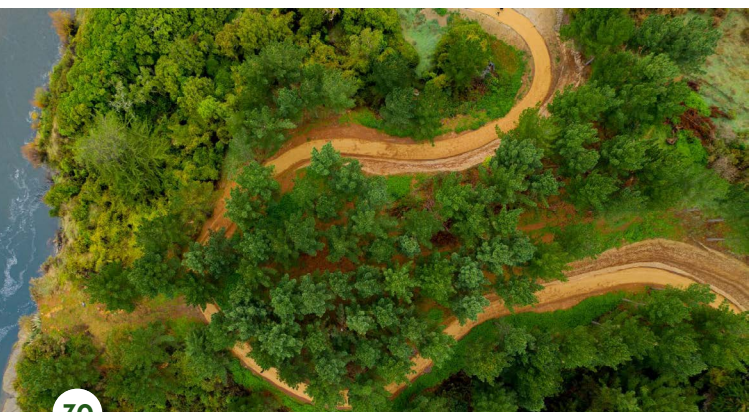


**1 – 2 hours**



**Low – Moderate**  
fitness level

All the beauty and wilderness of the main track, with less than half the distance and time. Head to the Ashhurst end of Te Āpiti – Manawatū Gorge and access this loop to adventure through ancient native bush that meanders up and around the southern edge of this geological masterpiece.



30

## HE ARA KOTAHI AND MANAWATŪ RIVER PATHWAY



**Palmerston North**  
129 Dittmer Drive



**Low – Moderate**

Walk or cycle alongside the Manawatū River as you weave your way through farmland, native bush and pā sites towards Linton Military Camp, or Massey University. Access via Dittmer Drive and start from the He Ara Kotahi Bridge that connects Victoria Esplanade to the other side of the river.



31

## SLEDGE TRACK



**Palmerston North**  
Kahuterawa Road End



**0.5hrs - 8.5hrs**



**Low - Advanced**  
fitness level

In the heart of the scenic Kahuterawa Valley, just 20 minutes from the city, you'll find tracks among ancient trees and native fauna with backdrops of rocky waterfalls. Travel to the end of the gravel Kahuterawa Road with the whānau for a short scenic walk, or if you're an experienced trumper, continue on to uncover old mineshafts and more spectacular scenery.



32

## RANGIWAHIA HUT TRACK



**Rangiwahia**  
Renfrew Road End



**3 - 6hrs**



**Moderate fitness level**

Follow the gravel road and head through farmland to take on this short, but challenging tramp to the top of the Ruahine Ranges, you'll be rewarded with spectacular sights and views surrounded by native birdsong along the way. Pack your camping supplies and book Rangiwahia Hut for an overnight adventure.



# EKE PAHIKARA // CYCLING & MOUNTAIN BIKING



33

## ARAPUKE MOUNTAIN BIKE PARK



**Palmerston North**  
Kahuterawa Road End



**Low - Moderate**  
fitness level



**arapuketrails**  
@gmail.com

Ride to your heart's content through a network of epic mountain bike trails, in the Lower North Island's premier mountain bike park. If it's your first time visiting, head to the Kahuterawa Road end and take either the Pupu Rahi or Back Track. These trails will get you into the heart of the action. There are trails from Grade 2 and for experienced riders, there are trails up to Grade 6. To pack in more downhill rides, get Kahuts Shuttles to do the heavy work with a lift back to the top of the trail.

**34**

## MANAWATŪ CYCLEWAY ON THE COUNTRY ROAD

**Mangaweka****2 days +****Advanced fitness level**

Take on this stunning multi-day, fully paved ride through Manawātū and experience the best of what our region has to offer. This 115km ride through back country roads leads you to hidden treasures such as country cafés, pubs, gardens and galleries so you can experience Manawātū — your way.

**Ngā Haerenga  
NZ Cycle Trails**





35

## TE ARA O MAHURANGI MOUNTAIN BIKE TRACK



Te Āpiti -  
Manawatū Gorge  
Hall Block Road



1 - 2 hours



Moderate fitness level

An exciting mountain bike trail that takes riders on a fast-paced downhill ride through 2 km of native bush in the natural wonderland of Te Āpiti - Manawatū Gorge. It is rated an intermediate trail, or level 3, and is not suitable for beginner riders due to some reasonably steep downhill sections.





36

## FOXTON MOUNTAIN BIKE TRAILS



**Foxton**  
SH1



**2 – 5 hours**



**Moderate fitness level**

Built within Target Reserve in Foxton, enjoy close to 20 kms of mountain bike tracks sheltered by pine trees just a couple minutes outside of Foxton township. These sand-based tracks are ideal for wetter weather when other tracks get too slippery.



37

## POHANGINA VALLEY LOOP



**Feilding**  
Manchester Square



**4 – 6 hours**



**Intermediate fitness level**

Ride through a variety of terrains, over hills and open flats with the backdrop of the Pohangina Valley accompanying you along the way. Cheese lovers can treat themselves to an artisan cheese tasting at Cartwheel Creamery. The road is mostly gravel, but the scenery outweighs the effort by far.

# PALMERSTON NORTH MAP







# MAPS

## MANAWATŪ REGIONAL MAP

### PINPOINT YOUR NEXT ADVENTURE.

#### Trying to plan your journey?

Take a glimpse at our maps, where you'll spot all the goodies in this guide and the scenic routes to take along the way. See where you need to be and the treasures nearby!

#### Some help along the way:

---



Fuel



Public Bathroom



Eatery/Cafe



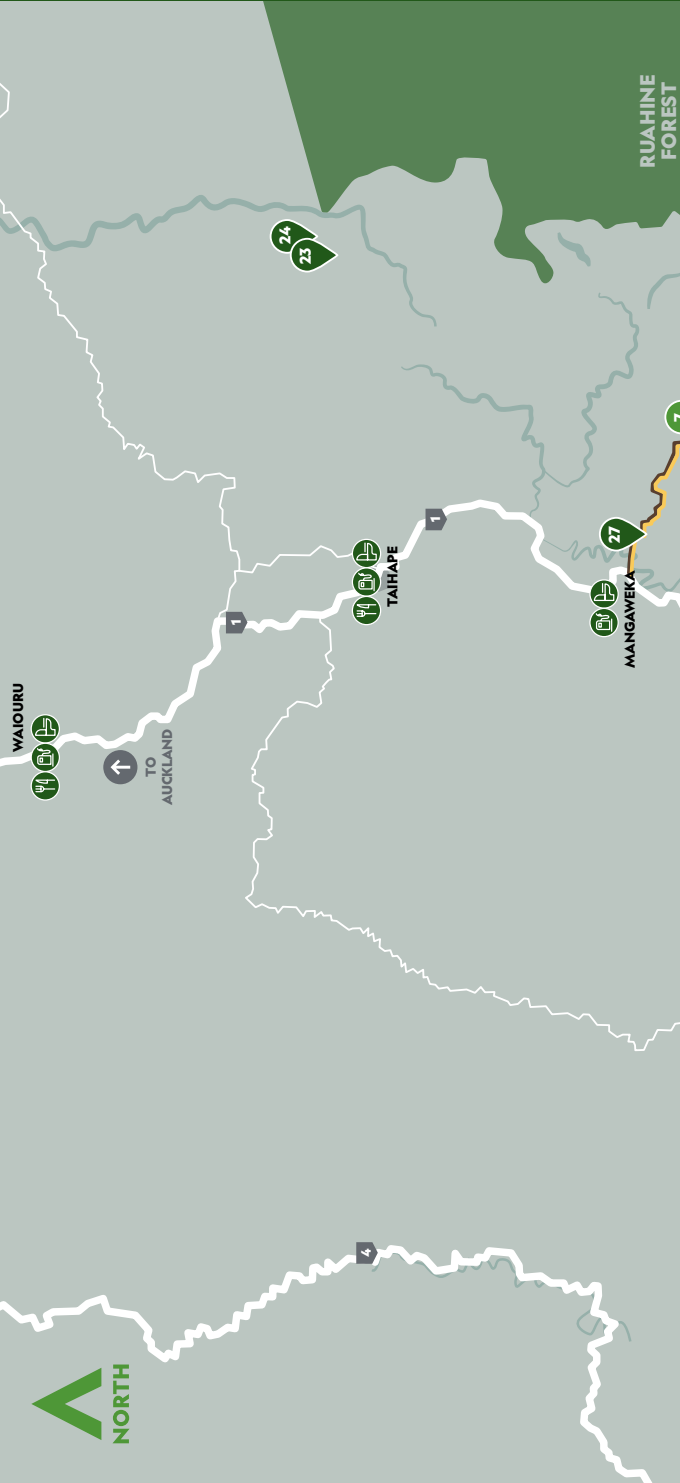
Medical Centre

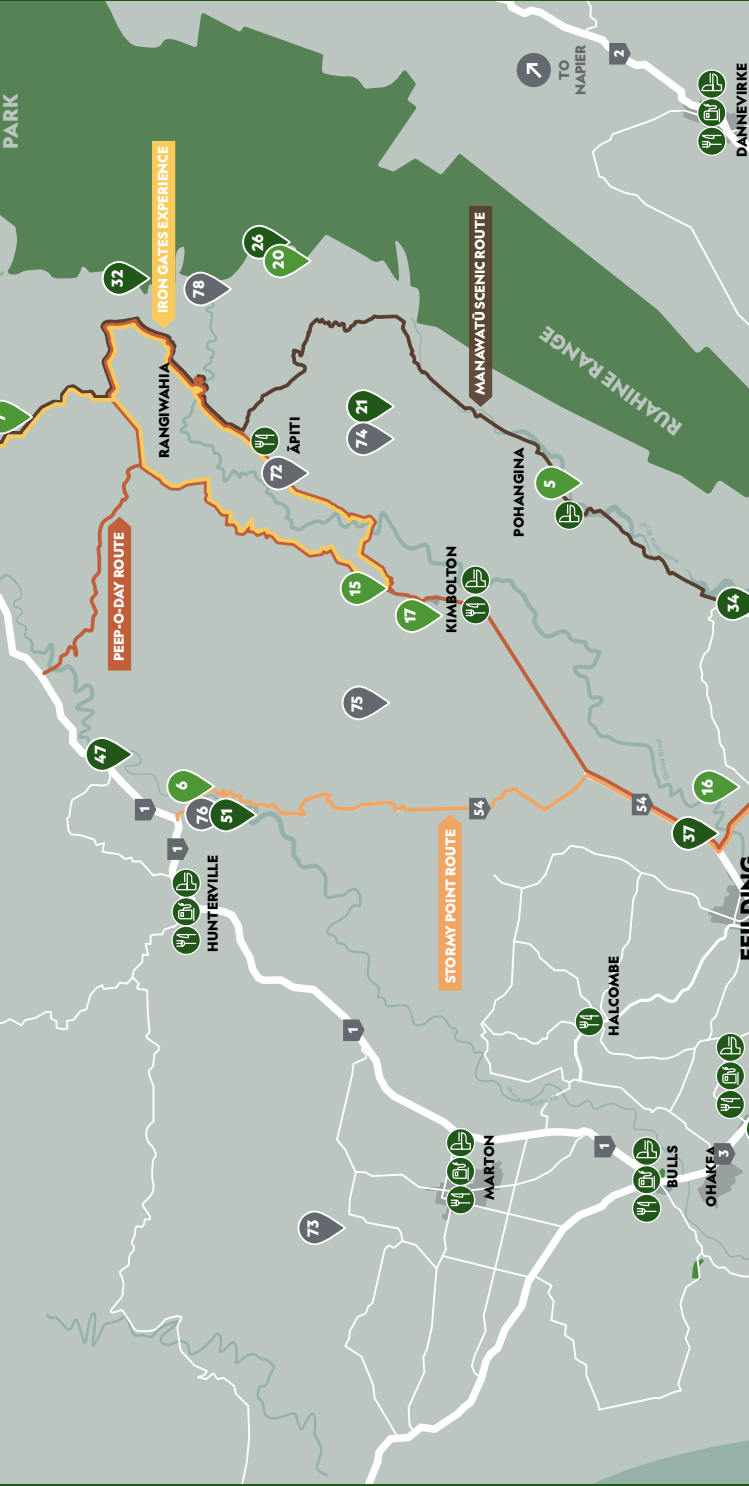


Shopping

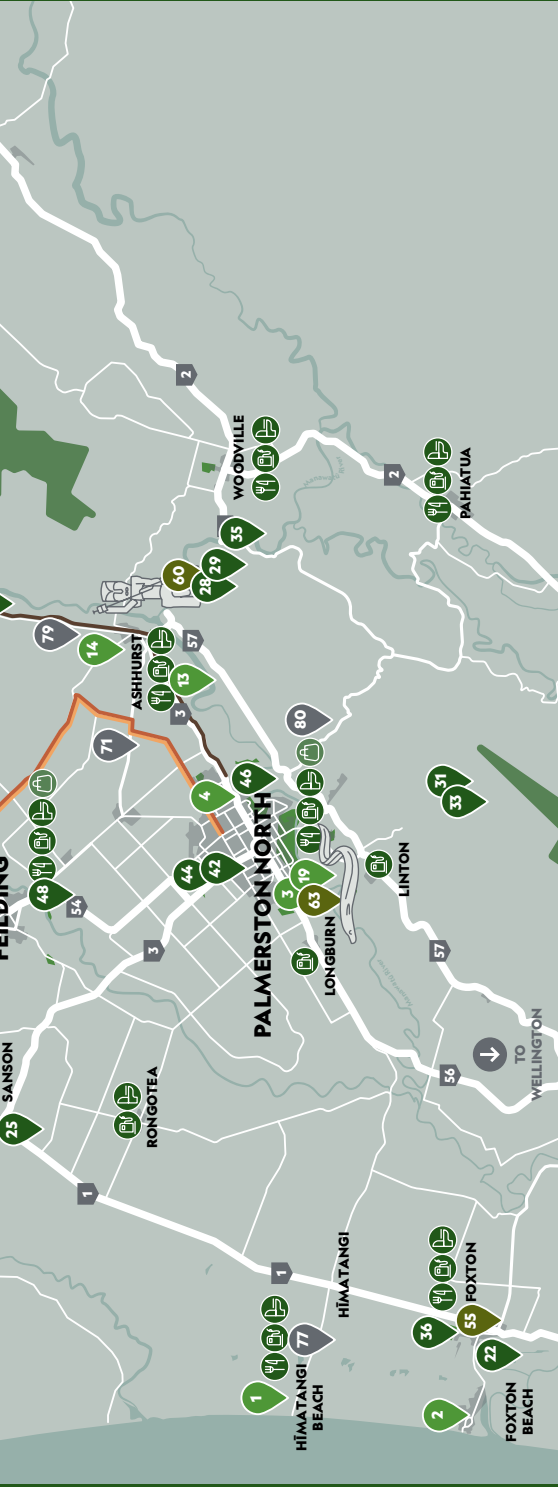


Information Centre









Fuel



Public Bathroom



Eatery/Cafe



Medical Centre



Shopping



Information Centre

# FEILDING MAP



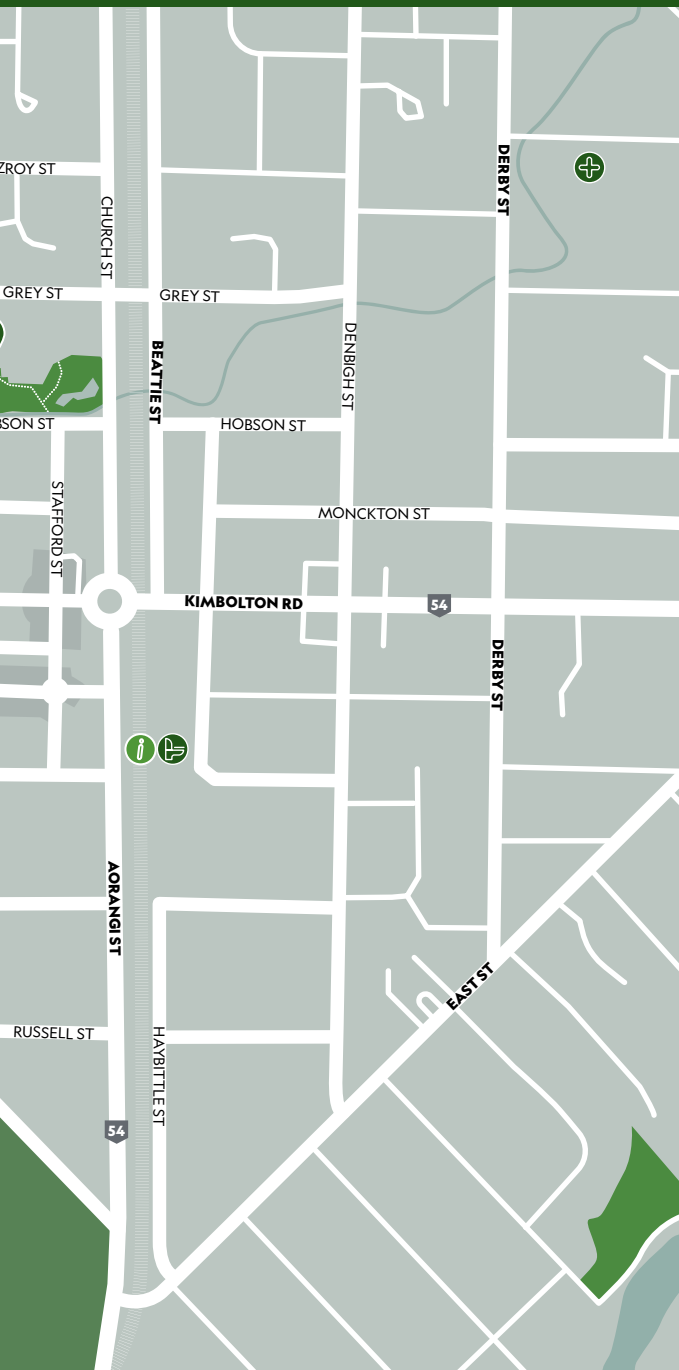
Fuel



Public Bathroom



Eatery/Cafe



Medical Centre



Shopping



Information Centre



# REKAREKA RŌWHARE // INDOOR FUN



• MĀTAWAI KIA KITEA •  
• SCAN TO SEE ALL •

38

## CLOUD 9



**Palmerston North**  
37 Taonui St



**\$11 - \$30**



**7 days 10am - 9pm**



**+64 6 777 5001**

Add a spring to your step at Cloud 9. This trampoline park is for all ages, with activities for everyone to enjoy. Battle your mates or test out your bouncing skills with an Olympic trampoline, ninja assault course and more on offer. Refuel with delicious food and drinks, including barista-made coffee at the on-site café.

39

## BOWLARAMA



**Palmerston North**  
4 Cuba Street



**\$11 - \$27**



**7 days**



**+64 6 356 7090**

Sure to be a knockout, pop on a pair of bowling shoes, grab yourself a ball and hit this 20-lane, fully automated ten pin bowling centre. If bowling isn't your thing, there's pool tables, arcade games, air hockey and a licensed bar with both alcoholic and non-alcoholic beverages and food to keep you fueled.



40

## LIDO AQUATIC CENTRE



**Palmerston North**  
Park Road



+64 6 357 2684



\$5 - \$20

Open all year round with indoor pools and an outdoor water park. Lap it up in the lane pools, soak your stress away in the spa or experience the thrill and excitement of the tallest and only superbowl in the North Island, with an open-flume speedslide that will propel the bravest of riders at up to 17 metres per second.



41

## MAKINO AQUATIC CENTRE



**Feilding**  
10 Council Place



+64 6 323 5312



\$4 - \$20

Splish, splash and splosh the day away at Feilding's Makino Aquatic Centre. There's something for everyone, with aqua classes, canoe polo and their mega fun weekend inflatables for those after some aqua agility!



42

## DAYTONA INDOOR RACEWAY



**Palmerston North**  
23 Bennett Street



**\$20 - \$52**



**+64 6 353 5082**

The Daytona Indoor Raceway is one of the best indoor go karting experiences in New Zealand. It attracts petrol heads from all around Aotearoa to race its tracks and test their driving skills. From adrenaline seekers to whānau looking for some fun with the kids, Daytona offers a fun-filled experience for all who graces its tracks.



43

## TIMEZONE



**Palmerston North**  
113 The Square



**+64 6 880 3096**

Test out your gaming skills at Timezone! This bright and colourful family entertainment arcade is packed with the latest games as well as classic favourites, offering customers the chance to win prizes from the extensive range of unique and branded quality products. Get energised, win a prize, and hone your skills at Timezone!



# HAHAUPŌRO // GOLF



44

## ORLANDO COUNTRY GOLF COURSE & DRIVING RANGE



**Palmerston North**  
748a Rangitikei Line



**10am – 5pm**



**info@**  
**orlandocountry.co.nz**  
**+64 6 280 2913**

This 9-hole course was designed and made for the modern golfer, featuring mostly par 3s with a few par 4s. Expect a few surprises along the way as you enjoy a round with your friends or master your skills with target greens on the full size driving range.



45

## MANAWATŪ GOLF CLUB



**Palmerston North**  
19 Centennial Drive



**Dawn till dusk**



**office@**  
**manawatugolfclub.com**  
**0800 701 125**

New Zealand's oldest golf course offers a challenging but fair test. Situated between the Manawatū River and Centennial Lagoon, you will enjoy the scenery as much as the game, with manicured fairways and rolling greens lined with trees.



46

## PALMERSTON NORTH GOLF CLUB



**Palmerston North**  
Brightwater Terrace

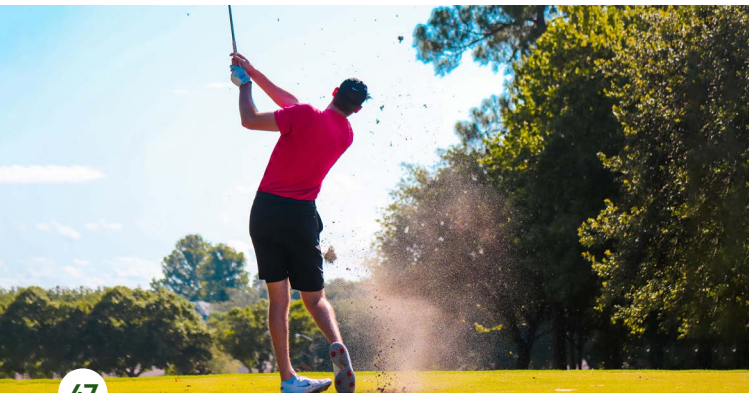


**8am – 5pm**



**palmerston.north@  
golf.co.nz**  
+64 6 351 0700

Located just a quick drive from the city centre, this friendly club sits on the banks of the Manawatū River. Offering a scenic 18 hole course, anyone is welcome to enjoy these beautiful grounds.



47

## RANGATIRA GOLF CLUB



**Hunterville**  
State Highway One

Arguably one of the best golf courses in the lower North Island, you'll find yourself starting out over stunning views of the Rangitikei River while you work your way through the unique 18 hole course. Once you're finished take a ride on the electric cable car, it's the only one in Aotearoa.



48

## FEILDING GOLF CLUB



**Feilding**  
Waugh's Road



**secretary@**  
**feildinggolfclub.co.nz**  
**+64 6 323 4553**

Sitting just outside of the Feilding township, you'll find a park-like 18 hole challenge at the Feilding Golf Club. Easy walking and well drained, you'll be welcomed by locals into the fully equipped clubhouse and pro shop.

# WHAKANGAU, HĪ IKA // HUNTING & FISHING



49

## ALPINE HUNTING



**info@**  
**alpinehunting.com**  
**+64 6 388 1344**

Experience world class hunting with Shane Quinn's Alpine Hunting. Stalk on foot or by air as you explore the vast, private ranch in the Rangitikei high country. Abundant herds of red stag and sika openly roam together naturally over rolling hills, native bush and mountainous ridges.





50

## ALTITUDE FLY FISHING



johnny@  
altitudeflyfishing.com

Johnny will show you around his home waters, an experience characterised by the beautiful, rugged Ruahine Range. Explore lowland rivers with high numbers of rainbow and brown trout or challenge yourself with remote, small spring-fed and backcountry style streams.



51

## PHEASANT SHOOTING AT RATHMOY



021 288 1873  
rathmoyshoots.com

Rathmoy is a fifth generation sheep and beef farm located in a beautiful wilderness area of the North Island of New Zealand. Your host, Mark Grace, has been passionate about shooting all his life and now provides a world-class experience on a piece of paradise.

# OFF THE VA



BERRYMANS LANE  
PALMERSTON NORTH



## ARTS & CULTURE

### Discover our creative side.

Inspired by the region's unique energy and interpreted by the cultural heart of the people, Manawātū's arts scene is vibrant and vivacious. Art galleries, theatres, museums, exhibitions and street art - it's enough to get your creative senses tingling.

Get out and amongst our dynamic cultural scene, scan the QR code for additional information.



SCAN TO LEARN MORE

**WHARE TONGAREWA 66**  
// MUSEUMS

**WHARE TOI 68**  
// GALLERIES

**TAONGA MĀORI TUKU IHO 70**  
// MĀORI HERITAGE

**WHARE TAPERE 72**  
// THEATRES

**WHARE KIRIATA 74**  
// CINEMAS

**ARA TOI KI TAI 75**  
// COASTAL ARTS TRAIL



# WHARE TONGAREWA MUSEUMS



52

## NEW ZEALAND RUGBY MUSEUM



**Palmerston North**  
326 Main Street



10am – 5pm daily

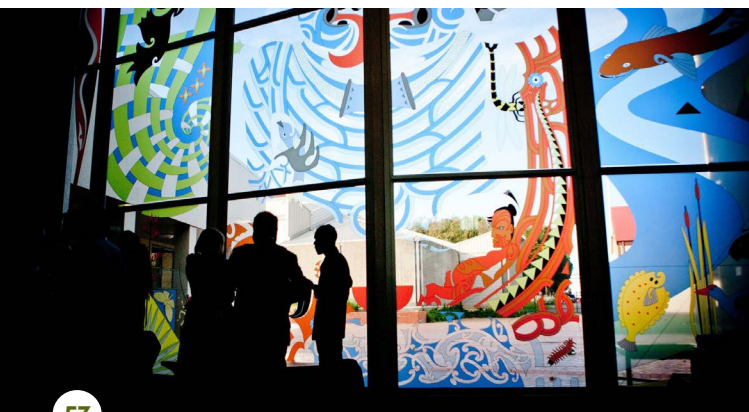


\$12.50



+64 6 358 6947

Home to the biggest and most comprehensive collection of rugby memorabilia and records within Aotearoa, be sure to visit the first museum devoted to the oval ball. Travel back in time to explore where our rugby heritage began or test out your rugby skills – kick, tackle, leap, sprint or push – in the ‘Have a Go’ area to see how you measure up to the boys in black.



53

## TE MANAWA MUSEUM OF ART, SCIENCE AND HERITAGE



**Palmerston North**  
326 Main Street

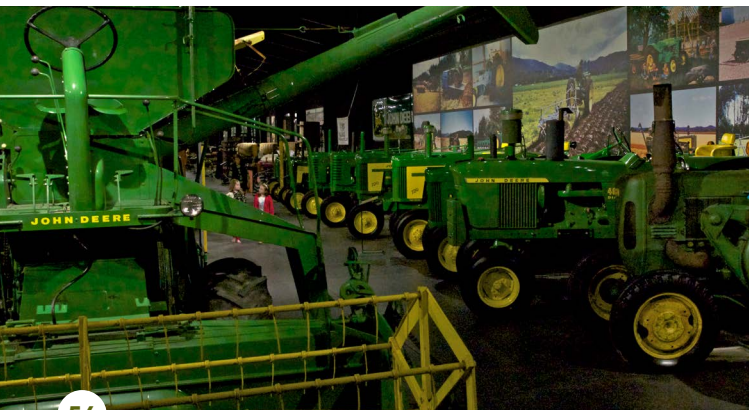


10am – 5pm daily



0800 4268 7386

Te Manawa is a museum working beyond boundaries at the cultural heart of Palmy. Manawatū prides itself on being a region that represents and celebrates diversity, courage and curiosity which is reflected through the art, science and heritage of Te Manawa.



54

## COACH HOUSE MUSEUM



**Feilding**  
127 South Street



**10am – 4pm**



**\$12 – \$30**



**+64 6 323 6401**

Join us on a trip down memory lane with stories of the good old days that showcase over 140 years of local early settler life, farming and historic horse-drawn transportation. Filled with local tales of days gone by, this is a world-class collection for all ages.



55

## TE AWAHOU NIEUWE STROOM



**Foxton**  
92 Main Street



**+64 6 363 5571**

Discover Māori, Dutch and pioneering history all under one roof in a setting that celebrates diversity. Bring the little ones along and reflect on your whānau roots and the diversity of Aotearoa. Finish your day with a taste of the Netherlands at Café De Molen.


**56**

## TE MANAWA ART GALLERY



**Palmerston North**  
326 Main Street

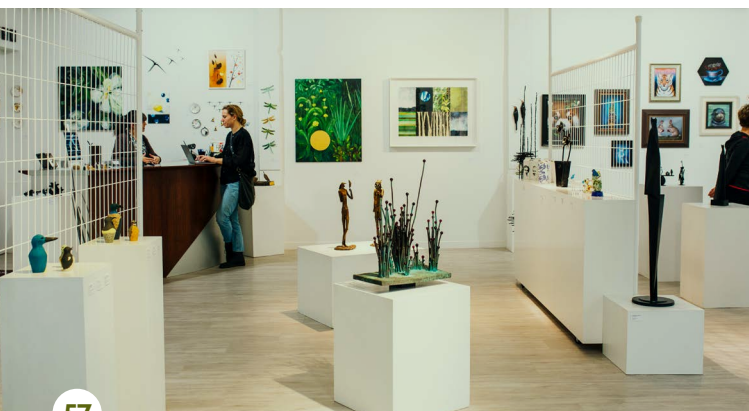


**10am - 5pm daily**



**enquiries@**  
**temanawa.co.nz**  
**+64 6 355 5000**

An art museum working beyond boundaries at the cultural heart of our city. Discover a range of inspiring work and immerse yourself in a range of styles from established and emerging local, national and international artists.


**57**

## ZIMMERMAN



**Palmerston North**  
329 Main Street



**Thursday - Sunday**  
**11am - 3pm**



**art@**  
**zimmerman.co.nz**  
**+64 6 353 0122**

Zimmerman was established with a clear vision to provide locals and visitors alike with the opportunity to view original and engaging works of art in the city centre. Wander through paintings, drawings and sculptures by New Zealand artists. A wide, brightly lit frontage leaves collections on display 24 hours a day.





58

## FEILDING AND DISTRICT ARTS SOCIETY



Feilding

104 Manchester Street



10am – 4pm



+64 6 323 6401

Find a warm and inviting space where stunning exhibitions by both emerging and established artists is showcased. Find affordable workshops on offer for artists at every stage of their creative journey and a treasure trove of unique art pieces, including paintings, sculptures, ceramics, jewelry, and more, all crafted by talented local creators. It's the perfect place to find a special gift or a beautiful addition to your home.



59

## SQUARE EDGE

Palmerston North  
47 The SquareMonday – Friday  
10am – 5pm

+64 6 241 8444

Described as a space where anyone can come in and enjoy themselves - it's like a village on its own. And that it is. Inside you'll find galleries, stores, workshops, studios, community spaces and even a café. Artists often work with open door policies so feel free to chat with them to learn more about their work.

# TAONGA MĀORI TUKU IHO // MĀORI HERITAGE

60

## WHATONGA, TE ĀPITI - MANAWATŪ GORGE



Te Āpiti -  
Manawatū Gorge

At 6 metres tall, Whatonga is a contemporary steel sculpture which sits at the top/halfway point of the Tawa Loop Track. It depicts historical seafarer and Rangitane chief Whatonga, who was one of the captains of the Kurahaupo Waka, which journeyed across the Pacific Ocean to Aotearoa, New Zealand possibly as early as the 12th century. The Ngāi Tara and Rangitāne people trace their descent from Whatonga.



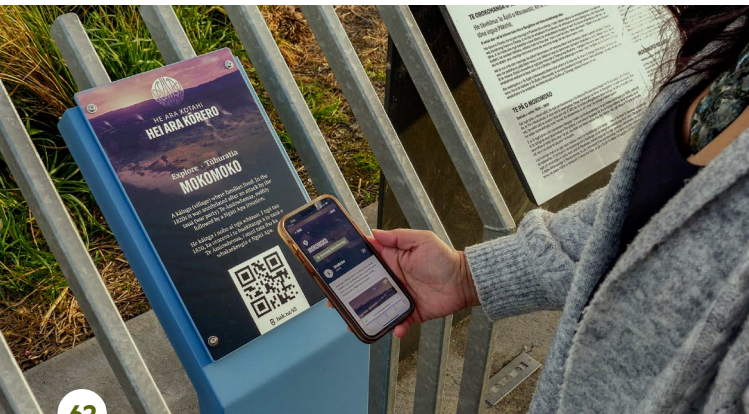
61

## TE MARAE O HINE (THE SQUARE)



Palmerston North  
The Square

Te Marae o Hine - The Courtyard of the Daughter of Peace was intended by iwi and the borough of the time to be a place of peace and unity for all facets of Papaioea. As the city was beginning to take form, a space referred to as "The Flat", remained untouched at its centre. Rangitāne kaumātua realised Māori needed a secure space for Māori customs to be preserved, and an area for all cultures to come together peacefully as a community.



62

## HE ARA KOTAHĪ, HEI ARA KŌRERO



**Palmerston North**  
Multiple access points  
along Manawātū River



**1-3 hours**



**Easy**

He Ara Kotahi, Hei Ara Kōrero brings to life pūrākau (stories), oral histories and historical recreations of life on and around Te Awa o Manawātū – the Manawātū River – through the people of Rangitāne o Manawātū. Journey along He Ara Kotahi and the Manawātū River Pathways to explore the six sites of special significance, scan the QR code at each marker and you'll be provided with an authentic and trusted source of ancestral knowledge through an innovative and interactive storytelling experience.



63

## TE PUHARA O TURITEA



**Palmerston North**

A viewing platform along the He Ara Kotahi pathway which offers an unobstructed view of our beautiful awa (river) and city. The lookout – a two-storey cantilevered platform was built in 2022 to give homage to Te Pūhara o Turitea, a traditional site of Rangitāne.

Te Pūhara o Turitea (the sentry watchtower of Turitea) was between nine and 15 metres tall and provided Rangitāne people with an unobstructed 360-degree view of anyone coming up or down the river.



# WHARE TAPERE // THEATRES



64

## CENTREPOINT THEATRE



Palmerston North  
280 Church Street



+64 6 354 5740

The only professional theatre in Aotearoa outside of the four main cities, Centrepoint Theatre is known for outstanding theatre designed to inspire, entertain and challenge audiences. Enjoy relatable Kiwi content and world-class plays for an unforgettable night out.



65

## REGENT ON BROADWAY



Palmerston North  
53 Broadway Avenue



+64 6 350 2100

You can see why The Regent was described as "The Theatre Beautiful" during its opening back in the early 1900's. Leading the standard of entertainment, sit back, relax and enjoy performances within this timeless facility.



66

## THE GLOBE

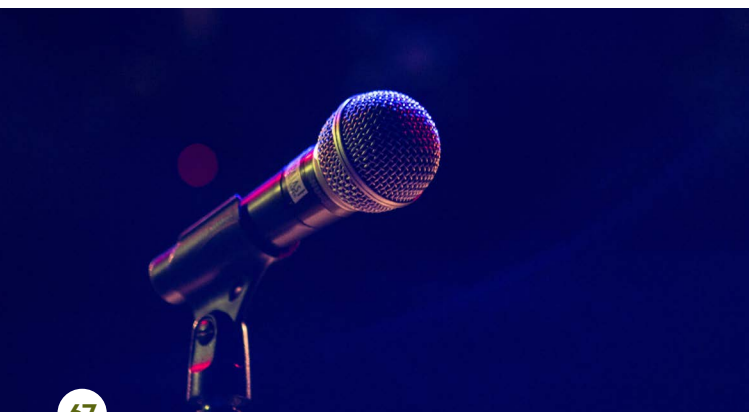


**Palmerston North**  
Cnr of Main & Pitt  
Streets



+64 6 351 4409

Inspired by Shakespeare's original open air circular theatre in London, The Globe's name derives from its unique circular design. Be entertained by performances from the talented local, national and international acts who grace the stage to deliver the best of theatre, dance, music, comedy, cabaret, film and so much more.



67

## THE DARK ROOM



**Palmerston North**  
283 Church Street



+64 6 354 5740

A must-do black-box venue for theatre, comedy, and music, The Dark Room provides a platform for emerging and established artists to experiment and showcase their talents in a variety of genres.

# KIRIATA // CINEMAS



68

## EVENT CINEMAS



**Palmerston North**  
Downtown Shopping  
Centre

Centrally located in the heart of Palmy, this is an iconic destination for new movies. Treat yourself to a snack from the candy bar as you sit back and immerse yourself in the latest blockbuster film.



69

## FOCAL POINT CINEMA



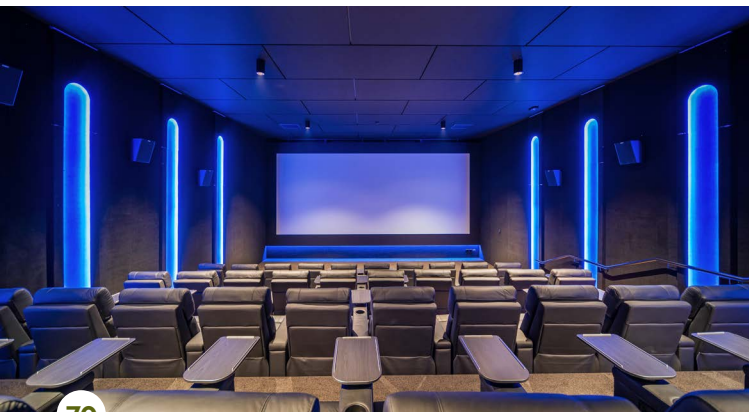
**Feilding &  
Palmerston North**



**Palmerston North**  
+64 6 241 8417  
**Feilding**  
+64 6 323 0218

Sit back and relax as you watch the latest blockbuster or independent release while enjoying a delicious meal and a drink in the quirky art deco setting. With two boutique locations across the region, in Feilding and Palmy, Focal Point Cinema & Cafe will provide you with a cinematic experience like no other.





70

## SILKY OTTER



Palmerston North  
539 Main Street



+64 6 826 4456

Silky Otter Cinema offers a full-service bar and kitchen with real chefs and a mouth-watering menu, food can be delivered straight to seats (with the ability to time food and drink orders), unmatched customer service, no ads, luxury recliners with more room for comfort and adjustable headrests, cutting-edge screen and sound technology, wall to wall screens and full laser projection.



**Coastal Arts Trail** // Take it at your own pace and enjoy an easy drive, stopping along the way at art galleries, museums and open studios, that sit nestled within the scenery.

Scan the QR code to learn more.





HOKOHO

## SHOP

### Browse our hidden gems.

Spend a little more than time here. Browse independent boutiques, pick up all the major brands, or be a little 'boujie' and buy artisan fare directly from farmers' market stalls. Indulge yourself with a little retail therapy, you never know what treasures you might discover.



SCAN TO LEARN MORE

**PAHEKEHEKE** 78  
// **BOUTIQUES**

**MĀKETE** 80  
// **MARKETS**

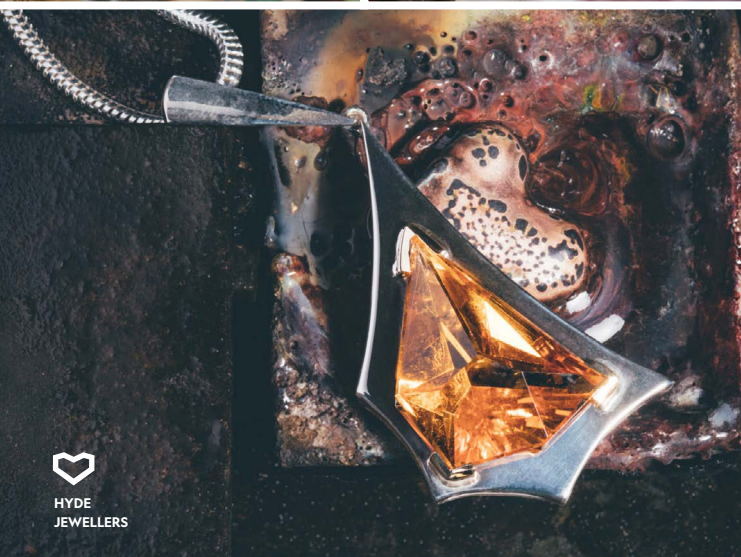


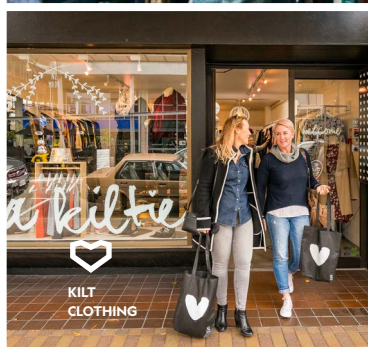
# PAHEKEHEKE // BOUTIQUES

**We've got the best in boutique shopping here.**

Just seconds from Te Marae o Hine - The Square and bustling with action, you'll discover a vast selection of quaint boutiques and independent stores - George Street and Coleman Mall are our picks!

Then pop over to Feilding for a spot of shopping at the great range of boutiques. You'll even be able to grab a free car park right outside.





# MĀKETE // MARKETS

One of the best ways to sample the region is by browsing the local markets. From locally grown produce and boutique artisan fare, to quirky crafts and funky homewares – the selection is right here ready to be explored. Meet the makers and growers, and hear their stories, know where your food comes from and sample tasty treats as you go.



## WEEKLY MARKETS

**Feilding Farmers' Market //** This award-winning market features stunning artisan products such as locally crafted cheeses, coffee, fresh vegetables, flowers and more. **Fridays 8:30am – 1pm.** Manchester Square, **Feilding.**

**Albert Street Farmers' Market //** Fresh fish, baked bread and hot foods make this a popular Saturday destination, along with a wide array of fresh produce. **Saturdays 6am – 10am.** Cnr of Albert & Church Street, **Palmerston North.**

**Highbury Flea Market //** Local produce, freshly baked Māori bread and tasty treats galore. **Sundays 7am – 1pm.** Highbury Shopping Centre Carpark, Highbury Avenue, **Palmerston North.**

**Sanson Market //** Get lost amongst the array of antiques and collectables, fresh produce and condiments galore in this community market. **Sundays 7am – 2pm.** Cnr of State Highways One and Three, **Sanson.**



## FORTNIGHTLY MARKETS

**Hokowhitu Village Farmers' Market //** This popular market offers a range of artisan and local produce and treats to tease your taste buds with live music to make it a complete experience. **Held on the first and third Sunday of every month, 9am - 1pm.** Hokowhitu Village, Albert Street, **Palmerston North.**



CROSS HILLS GARDEN  
COUNTRY FAIR



## ANNUAL & BI-ANNUAL MARKETS

**Cross Hills Garden Country Fair //** Held in world-renowned Rhododendron gardens in Kimbolton, Cross Hills Garden Country Fair offers 180+ fantastic stalls, live music and delicious food trucks. **Held annually in November.** 339 Rangiwahia Road, **Kimbolton.**

**Magic of Christmas Night Market and A Winter's Day Out //** Built on the love of the festive season, the gift of giving and gathering with friends and whānau, the Magic of Christmas Night Market and A Winter's Day Out both offer

boutique shopping experiences, fantastic eating and drinking options and live music. **A Winter's Day Out will be held in July and The Magic of Christmas Night Market in December.** Awapuni Racecourse, **Palmerston North.**

**The Feilding Craft Market //** NZ's largest indoor craft and vintage market with over 200 stalls. The Feilding Craft Market is held bi-annually and offers a mix of craft, vintage and retro finds. **Held bi-annually in June and October.** Manfeild Events Centre, **Feilding.**

# INATE REKA



BREW  
UNION

## TASTE

### Fill your tank.

Fuel up on all your foodie favourites. Manawatū is made to be savoured. Brunch, lunch, dinner, drinks and everything in between. You'll find all kinds of top eats here, from traditional kiwi café treats to the best international cuisines.



SCAN TO LEARN MORE

**WHARE KAWHE 84**  
// CAFÉS

**KIA MATAARA! 85**  
// ROASTERIES

**KAI HĪRAMURAMU 86**  
// CASUAL DINING

**KAPOHIA, KUMEA! 87**  
// GRAB & GO

**KAI HŪNENE 88**  
// EVENING DINING

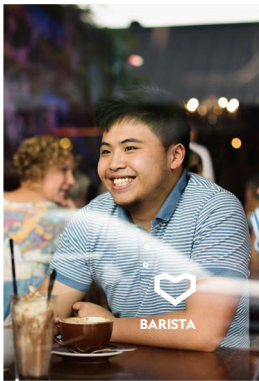
**INU 89**  
// DRINKS



# WHARE KAWHE // CAFÉS

Get your café hit by exploring all the best brunch spots in Manawātū. Sip a short black, crunch into a fresh salad, or satisfy those smashed avo cravings. You'll be spoilt for choice.

Scan the QR code to find your favourite brunch spot(s).



# KIA MATAARA! // ROASTERIES

Start the day off right with a hot brew from one of six local coffee companies! Move aside Wellington, Manawatū is the up-and-coming coffee capital of New Zealand. Your flat white is in safe hands here!



# KAI HĪRAMURAMU // CASUAL DINING

From burgers and brews to sushi and saké, when it comes to casual dining - Manawatū has your cravings covered.

Scan to find the nearest place to fill your tank.





# KAPOHIA, KUMEA! // GRAB & GO

Got a day packed full of exploring the region? If you're short on time, grab a bite from one of these foodie spots which are all perfect for packing in your backpack or eating on the run!



KNEAD



BABCO

HELLO  
SUNSHINE

THE ROSEBOWL

FREDDIE  
CLERE

# KAI HŪNENE // EVENING DINING

Soak in the atmosphere, enjoy a spot of lunch in the sun, and savour Manawatū's evening dining scene.

Scan the QR code to find all the best fine-dining selections our region has to offer.



LITTLE  
SAVANNA



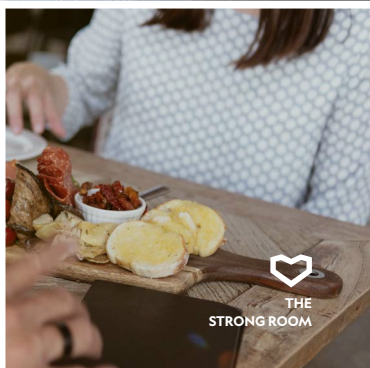
AMAYJEN



FAT  
FARMER



SPEIGHT'S  
ALE HOUSE

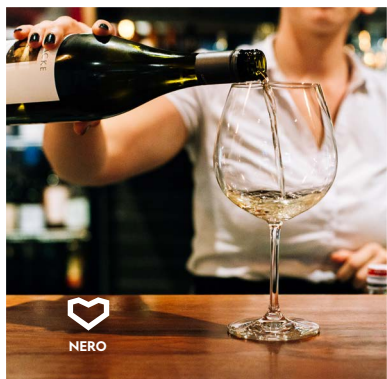


THE  
STRONG ROOM

# INU // DRINKS

Enjoy cocktails in corner bars, craft beer in city courtyards or your choice of tippie from a traditional country pub. The drinks are cold, and the locals are friendly.

Sit back, relax and enjoy a drink or two - just scan and choose what you're in the mood for.



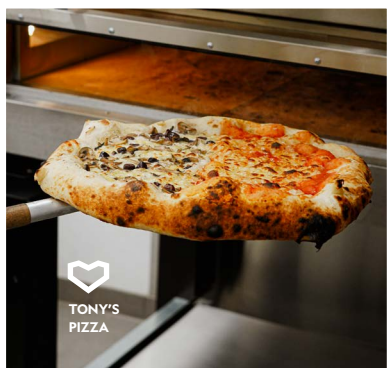
NERO



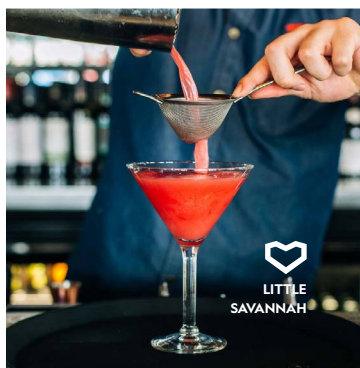
REGENT  
ARCADE



BREW  
UNION



TONY'S  
PIZZA



LITTLE  
SAVANNAH



# WAI OTO Z



HIWINUI  
COUNTRY ESTATE

## STAY

### Somewhere to recharge.

From the mountains to the sea, choose your Manawatū stay, settle in and let the days drift away. Whatever you fancy we've got it, from boutique lodges, lush city-central stays to a night under the stars.



SCAN TO LEARN MORE

**HŌTERA, MŌTERA, NOHO HOPUNI // 92**  
**HOTELS, MOTELS, CAMPGROUNDS**

**NOHO PĀMU, NOGO RŌTI, 94**  
**MOE ME TE PARAKUIHI**  
**// FARM STAYS, LODGES & B&BS**

# HŌTERA, MŌTERA, NOHO HOPUNI // HOTELS, MOTELS, CAMPGROUNDS

Relax in style in the city-centre. Whether you're here for work, or play we've got a great selection of luxurious hotels for you to choose from.

Whether you're here for business or pleasure, you'll find a motel or apartment to suit. Pick your perfect location and settle in for a stay that offers all the comforts of home.

Grab the whānau, stack the car, and spend some time together under the stars. With self-contained, freedom camping, or full amenity campground options, all you'll need to do is take your pick of beach, river or mountain. It's all at your fingertips.

Scan the QR code to explore what our region has to offer.







# NOHO PĀMU, NOGO RŌTI, MOE ME TE PARAKUIHI // FARM STAYS, LODGES & B&BS



71

## HIWINUI COUNTRY ESTATE

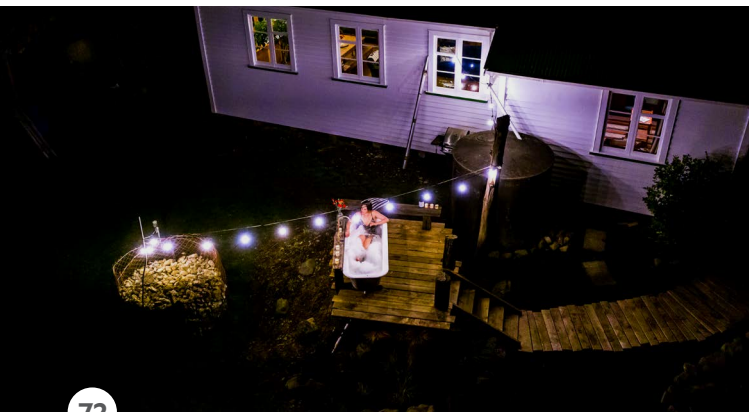


Hiwinui  
Ashhurst Road



info@  
hiwinui.co.nz  
+64 6 329 2838

Enjoy excellence, while relaxing and reconnecting with your special someone at an exclusive rural retreat. Treat yourself to a couple's or maybe a girl's weekend. The lodge even provides the perfect destination for your team's training and development getaway.



72

## THE LAST CHURCH IN ĀPITI



Āpiti  
Makoura Road



027 2525 393  
lastchurchapiti@gmail.com

The ultimate wellness retreat nestled in the quaint village of Āpiti. Stay in a renovated Sunday School and relax in this oasis, enjoying a star lit bath, cosy warm wood burner or a tranquil yoga session in the mature gardens.



73

## RANGITĪKEI FARMSTAY



Marton  
422 Makuhou Road



kiwifarmstay@gmail.com

Find your home away from home at Andrew and Kylie's little slice of paradise. Having hosted guests from across the globe, the farm "Tyrone" has been in the family since 1901. As you relax in serenity with the sounds of nature playing in the background, you'll find (like all before you) - there's something special about this place.





74

## MAKOURA LODGE

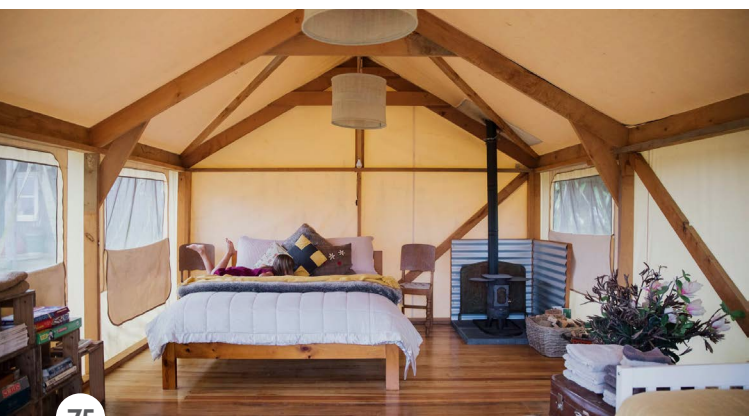


Āpiti  
736 Makoura Rd



enquiry@  
makouralodge.co.nz  
+64 6 328 4746

Get off the beaten track, relax and enjoy a unique experience at the picturesque and secluded Makoura Lodge. Bring the whānau for days of endless fun with up to 25 different activities offered. Jump on horseback and trek up and down rolling hills through surrounding bush and farmland. Or stay at the Riverside Retreat Cabin for a peaceful and romantic getaway.



75

## RIDGE TOP FARM GLAMPING



Feilding  
1027 Waituna Tapuae  
Road



ridgetopfarmnz@  
gmail.com  
027 598 3039

Experience the true tranquility of glamping at a sheltered spot on a Kiwi farm. Soak up the panoramic scenery, encompassing Kāpiti Island, Mount Taranaki and Mount Ruapehu. Wake up to the sound of magpies warbling in the early morning light and enjoy the easy going pace of rural life. If you're after something active, check out the fully catered scenic farm walk.



76

## RATHMOY ESTATE



Hunterville  
136 Cooks Road



info@  
rathmoy.co.nz  
021 288 1873

Rathmoy Estate borders the spectacular Rangitikei River where the unique surrounding beauty of the bush clad cliffs and sparkling river create a stunning view from the boutique lodge. This is the perfect location for whānau getaways, or a weekend away with your friends to reset, relax and reconnect with nature.

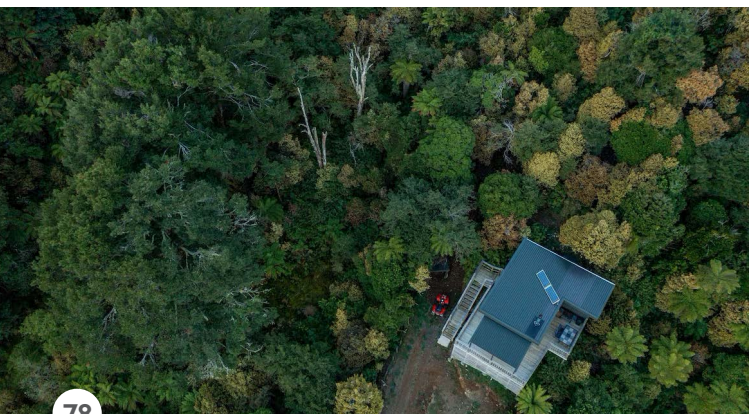
**77****COASTAL RETREAT**

**Hīmatangi Beach**  
Hīmatangi Beach Road



**admin@**  
**coastalretreat.co.nz**

Whatever the occasion may be – a weekend escape, a romantic getaway or fun family fishing trip, Coastal Retreat's fully equipped Mongolian yurts provide the ultimate unique accommodation option, just minutes from Hīmatangi Beach. Fully insulated, your stay here will be comfy and cosy all year round.

**78****FALCONS VIEW**

**Rangiwahia**  
East Mangahua Road



**mcdeesb@gmail.com**

Nestled up in the Ruahine Ranges, Falcon's View is a spacious off-grid studio with seriously breathtaking views of the native bush of Rangiwahia. Self-contained and featuring a gorgeous wrap-around balcony, you and your significant other will not want to leave. Get the wood burner stoked up and you'll be toasty all night long!





79

## SADDLE HILLS LUXURY B&B

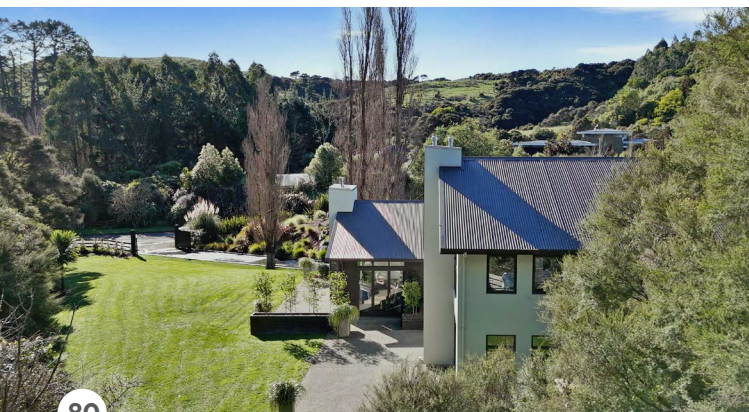


Ashhurst  
Pohangina Road



info@saddlehills.co.nz

Situated in Pohangina valley, Saddle Hills Luxury Bed and Breakfast offers absolute comfort, delivered with a generous serving of rustic charm that makes you feel instantly at home. A weekend away at Saddle Hills combines pristine accommodation with stunning gardens, magical views, and the option to self-cater or be waited on!



80

## KAITAHI LODGE



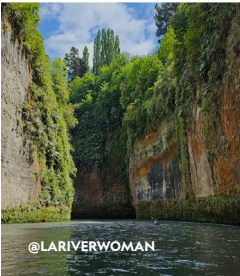
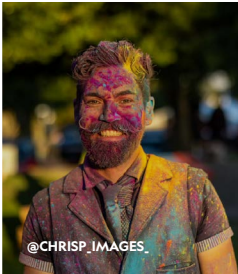
Aokautere  
Kingsdale Park Drive



book@kaitahilodge.nz

An exquisite culinary experience meets luxurious retreat just 10 minutes out of Palmerston North. This luxury lodge offers an idyllic retreat enhanced by the natural serenity of surrounding native bush and birdlife. The lodge is beautifully finished with features such as floor-to-ceiling windows, a large log fireplace, wine cellar and in-house cinema.

# #THISISMANAWATU



# TIAKI PROMISE

WHILE TRAVELLING IN  
NEW ZEALAND I WILL



CARE FOR LAND, SEA AND NATURE,  
TREADING LIGHTLY AND LEAVING  
NO TRACE



TRAVEL SAFELY, SHOWING CARE  
AND CONSIDERATION FOR ALL



RESPECT CULTURE, TRAVELLING  
WITH AN OPEN HEART AND MIND



[TIAKINEWZEALAND.COM](https://tiakinewzealand.com) | [#TIAKIPROMISE](https://twitter.com/tiakipromise)



# NEED FURTHER INFORMATION

## SCAN

---

This is just a taste of some of the best our region has to offer. Scan to find out more about Manawatū.



## SOCIAL

---

Find and follow the latest updates from us on social:



**INSTAGRAM**

@Manawatu\_NZ  
#ThisIsManawatu



**FACEBOOK**

Palmy & Manawatū



**YOUTUBE**

ManawatuNZ

# IER ON?

Look out for our  
**Walking & Cycling Guide &  
The Country Road Guide**  
for more information.



## VISIT

---

### **PALMERSTON NORTH CITY I-SITE**

The Square, Palmerston North  
P: 0800 MANAWATU (626 292)  
E: [isite@pncc.govt.nz](mailto:isite@pncc.govt.nz)

### **FEILDING AND DISTRICT INFORMATION CENTRE**

64 Stafford Street, Feilding  
T: +64 6 323 5373  
E: [infocentre@mdc.govt.nz](mailto:infocentre@mdc.govt.nz)

This is an official publication produced by the Central Economic Development Agency (CEDA) September 2023. While every effort has been made to provide correct information, there may be changes. Please note this information should be used as a guide only.

Image Credits: [ManawatuNZ.co.nz](http://ManawatuNZ.co.nz)



**INSTAGRAM**

@Manawatu\_NZ  
#ThisIsManawatu

**FACEBOOK**

Palmy & Manawatū

**YOUTUBE**

ManawatuNZ

**ManawatuNZ**.co.nz